



27 Lovers Walk, Dunstable, LU5 4BG

Nova Estate Agents are delighted to present this impressive detached Victorian family home located in the sought after Priory area, just off Dunstable town centre. Set on a generous plot of approximately 0.25 acres this beautifully renovated residence seamlessly blends modern updates with its charming original features.

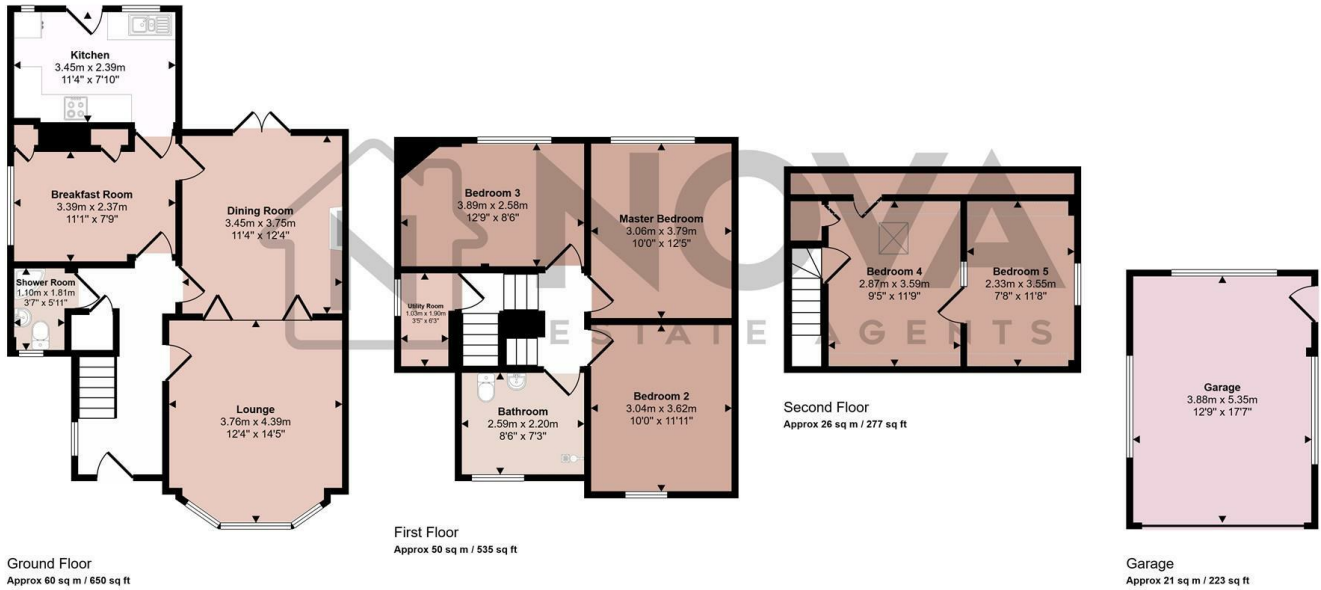
Steeped in character, the property boasts high ceilings of approximately 3 meters, four original fireplaces, intricate birds-beak plasterwork, squire finishes, dado rails, and elegant cornice coving throughout. The home also retains its stunning stained glass windows and original wooden front door adding to its timeless appeal.

Spanning three floors, the spacious accommodation includes three reception rooms and 4/5 double bedrooms offering versatility for family living. A large garage is conveniently situated to the side of the property, while modern enhancements such as solar panels and an electric

- Nova Estate Agents
- Press Play Button For 360° Walkaround Tour
- Excellent Development Opportunity
- Approximately a 0.25 Acre Plot
- Original Ornate Features Throughout
- 4/5 Bedroom Detached Residence
- 3 Reception Rooms
- Popular Priory Area
- Large Garage & Driveway Parking for Multiple Cars
- Favourable Pre-Application for Development Submitted

£700,000

Approx Gross Internal Area
157 sq m / 1685 sq ft



This floorplan is only for illustrative purposes and is not to scale. Measurements of rooms, doors, windows, and any items are approximate and no responsibility is taken for any error, omission or mis-statement. Icons of items such as bathroom suites are representations only and may not look like the real items. Made with Made Snappy 360.

