



## 43 Turnpike Drive, Luton, LU3 3RA

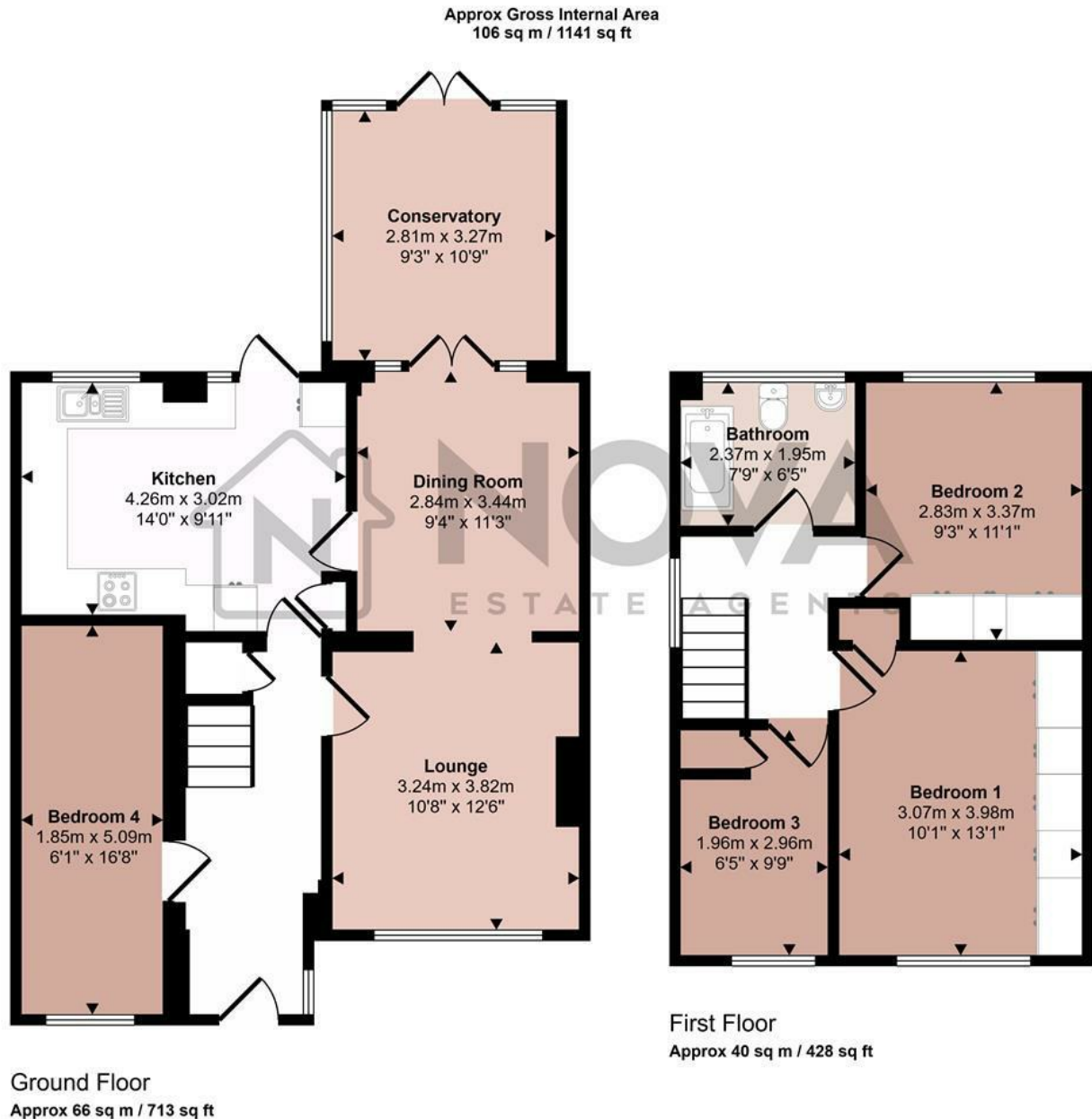
Nova are thrilled to present this beautifully extended 4 bedroom semi-detached home, perfectly situated on the highly sought after Turnpike Drive in North Luton. Lovingly decorated by its current owners, the property boasts a warm and inviting atmosphere throughout.

Upon entering, a spacious hallway welcomes you with stairs leading to the first floor. A versatile fourth bedroom has been created by converting the existing garage adding to the home's flexibility. The bright and airy living room features a double glazed bay window to the front and seamlessly flows into the open plan dining area. The modern kitchen has been recently refitted and is equipped with sleek white gloss wall and base units providing ample storage and overlooks the well maintained rear garden. Additionally, a charming conservatory offers extra living space, perfect for relaxation.

Upstairs, the property comprises three generously sized bedrooms and a stylish family bathroom

- Nova Estate Agents
- Press Play Button For 360° Walkaround Tour
- Extended 3/4 Bedroom Home
- Popular Location
- Conservatory
- Recently Refitted Kitchen
- Modern Decor Throughout

£400,000



This floorplan is only for illustrative purposes and is not to scale. Measurements of rooms, doors, windows, and any items are approximate and no responsibility is taken for any error, omission or mis-statement. Icons of items such as bathroom suites are representations only and may not look like the real items. Made with Made Snappy 360.

Energy Efficiency Rating		
	Current	Potential
Very energy efficient - lower running costs		
(92 plus) <b>A</b>		
(81-91) <b>B</b>		
(69-80) <b>C</b>		
(55-68) <b>D</b>		
(39-54) <b>E</b>		
(21-38) <b>F</b>		
(1-20) <b>G</b>		
Not energy efficient - higher running costs		
<b>England &amp; Wales</b>	EU Directive 2002/91/EC	