



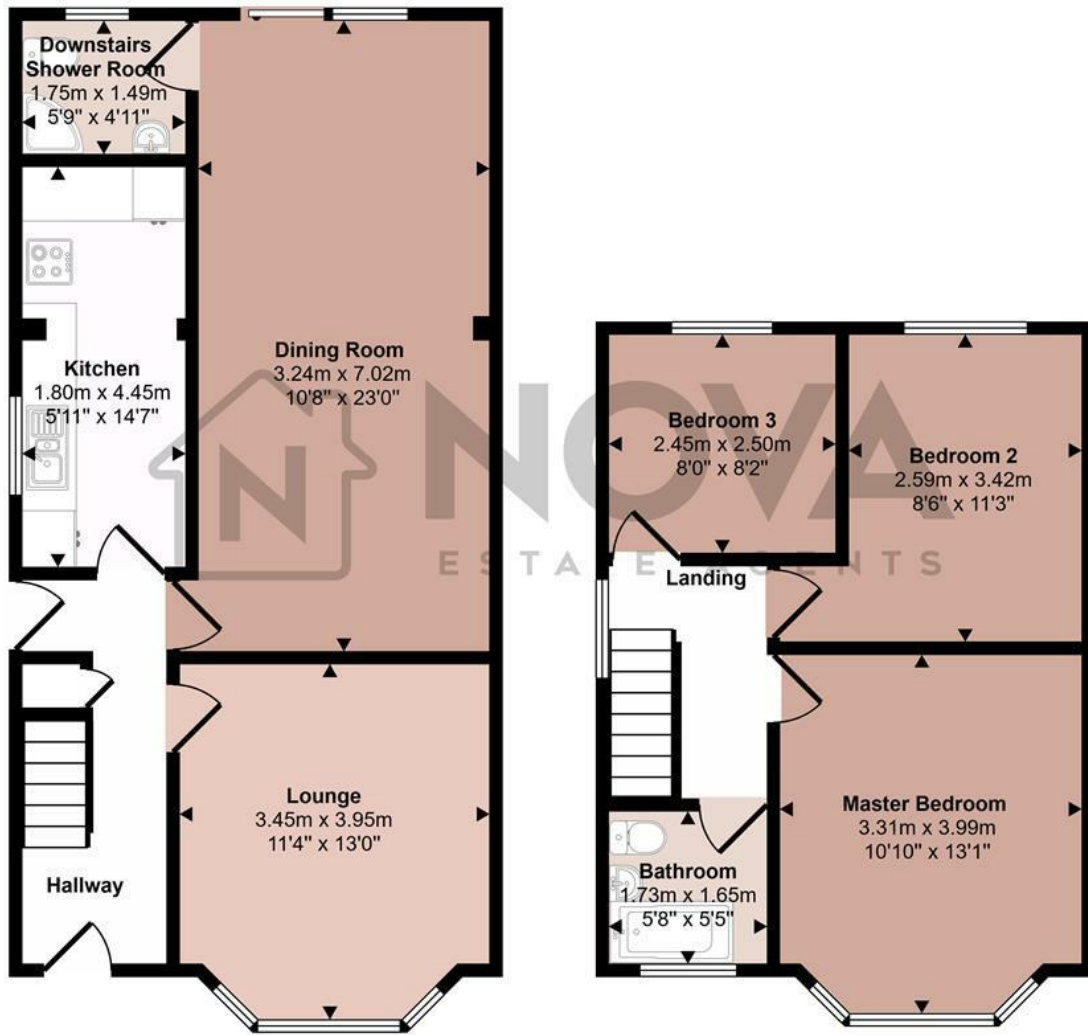
24 Norman Road, Luton, Beds, LU3 1JN

Located on the sought after Norman Road, this extended three bedroom semi detached home offers generous living space and modern conveniences. The property features two reception rooms, with the second reception room benefiting from an extension, a downstairs shower room and an upstairs family bathroom, providing flexibility for family living. The well proportioned kitchen offers ample space for meal preparation, while the large outhouse presents an excellent opportunity for storage, a home office, or a gym. Situated close to shops, schools, and mosques, this home benefits from excellent local amenities and transport links. Available chain free, this is a fantastic opportunity for families or investors alike. Contact Nova Estate Agents today to arrange a viewing!

- Nova Estate Agents
- Press Play Button For 360° Walkaround Tour
- Downstairs Shower Room and Upstairs Family Bathroom
- Extended Three Bedroom Home
- Close to Local Shops, Schools and Mosques
- Semi Detached Home
- Rear Garden
- Seperate Outhouse
- 2 Reception Rooms
- Chain Free

£325,000

Approx Gross Internal Area
93 sq m / 1004 sq ft



This floorplan is only for illustrative purposes and is not to scale. Measurements of rooms, doors, windows, and any items are approximate and no responsibility is taken for any error, omission or mis-statement. Icons of items such as bathroom suites are representations only and may not look like the real items. Made with Made Snappy 360.

Energy Efficiency Rating		
	Current	Potential
Very energy efficient - lower running costs		
(92 plus) A		86
(81-91) B		
(69-80) C		
(55-68) D	67	
(39-54) E		
(21-38) F		
(1-20) G		
Not energy efficient - higher running costs		
England & Wales	EU Directive 2002/91/EC 