



54 Crowthorp Road, Northampton, NN3 5EY

Nova Estate Agents are delighted to present this well maintained three bedroom home, offering a unique layout and spacious living throughout.

As you step inside the welcoming hallway provides access to a cloakroom and a stylish lounge. The home's distinctive split-level design leads up to a generous kitchen/diner complete with a breakfast bar, ample space for a family dining table, and a large pantry for additional storage. The ground floor also boasts a bright and airy conservatory, seamlessly connecting to the rear garden through patio doors.

On the first floor, you'll find a sleek refitted modern bathroom with a three-piece suite along with a well-proportioned double bedroom featuring built-in storage. The top floor hosts two further spacious bedrooms making this home ideal for families or professionals seeking extra space.

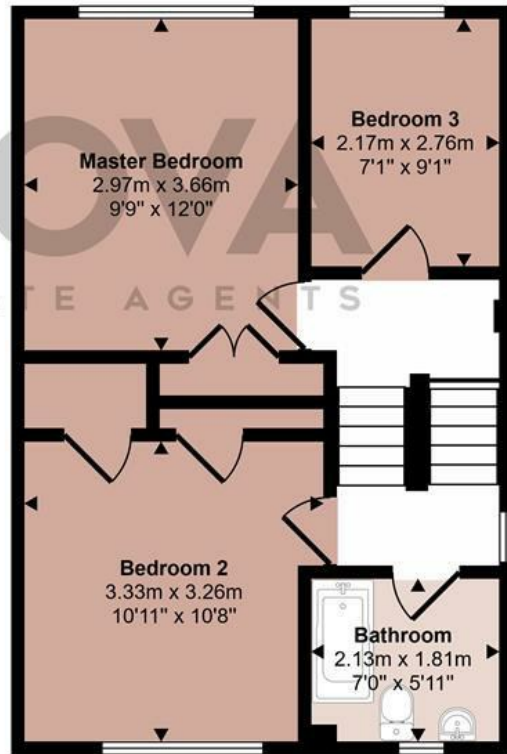
- Nova Estate Agents
- Press Play Button For 360° Walkaround Tour
- Spacious Family Home
- Available Now!
- Well Presented Throughout
- Conservatory
- Large Kitchen/Diner
- Modern Bathroom
- Company Lets Welcome

£1,250 Per month

Approx Gross Internal Area
90 sq m / 964 sq ft



Ground Floor
Approx 47 sq m / 511 sq ft



First Floor
Approx 42 sq m / 453 sq ft

Denotes head height below 1.5m

This floorplan is only for illustrative purposes and is not to scale. Measurements of rooms, doors, windows, and any items are approximate and no responsibility is taken for any error, omission or mis-statement. Icons of items such as bathroom suites are representations only and may not look like the real items. Made with Made Snappy 360.

Energy Efficiency Rating		
	Current	Potential
Very energy efficient - lower running costs		
(92 plus) A		
(81-91) B		
(69-80) C		
(55-68) D		
(39-54) E		
(21-38) F		
(1-20) G		
Not energy efficient - higher running costs		
England & Wales	EU Directive 2002/91/EC	