



## 26 Beckham Close, Luton, Beds, LU2 7BX

Nova are thrilled to present this exceptional executive detached family home, perfectly situated in a quiet cul-de-sac in the sought after Bushmead area of Luton. Lovingly maintained and thoughtfully updated by its current owners, this property occupies a generous plot and offers a superb blend of space, style and practicality.

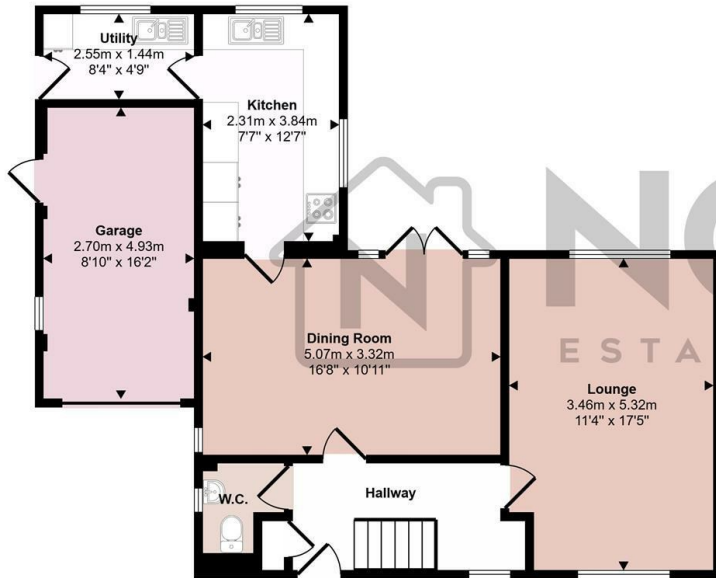
Upon entering, you are welcomed by a spacious hallway leading to a downstairs cloakroom, a large living room featuring a large box bay window and a separate lounge/dining room, an ideal space for entertaining complete with patio doors opening onto the garden. The stunning kitchen is complemented by a separate utility room adding to the home's convenience.

Upstairs, you'll find four well proportioned bedrooms including the master bedroom with an en-suite, as well as a sleek modern family bathroom. The property showcases attention to detail throughout ensuring a high quality finish for its future owners.

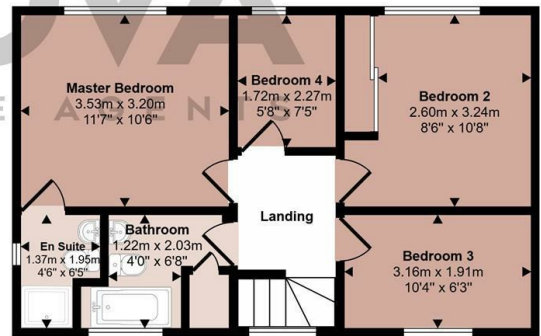
- Nova Estate Agents
- Press Play Button For 360° Walkaround Tour
- En-suite to Master Bedroom
- Driveway & Garage
- Popular Bushmead Location
- Planning Granted for Garage Conversion
- Modern Detached Home
- Utility Room

£475,000

Approx Gross Internal Area  
119 sq m / 1280 sq ft



Ground Floor  
Approx 73 sq m / 787 sq ft



First Floor  
Approx 46 sq m / 493 sq ft

This floorplan is only for illustrative purposes and is not to scale. Measurements of rooms, doors, windows, and any items are approximate and no responsibility is taken for any error, omission or mis-statement. Icons of items such as bathroom suites are representations only and may not look like the real items. Made with Made Snappy 360.

