



5 Besford Close, Luton, LU2 8TX

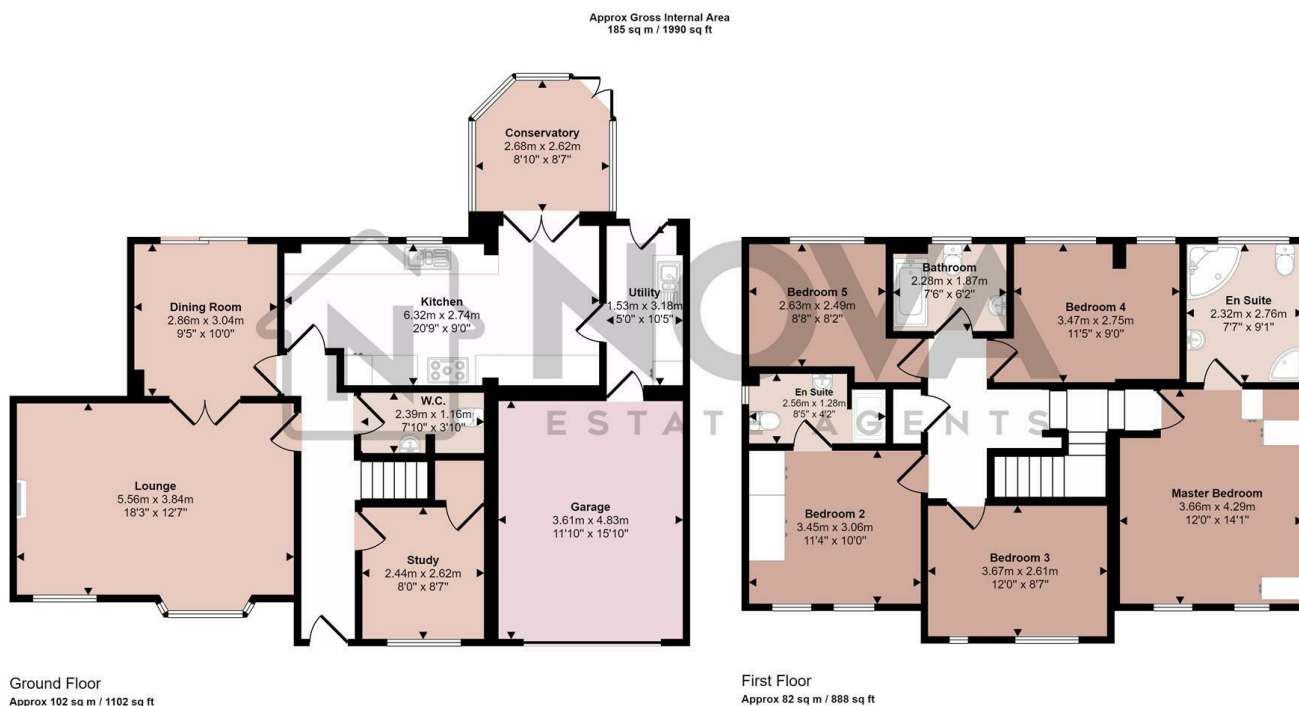
****Spacious Five Bedroom Detached Home in The Desirable Wigmore Location****

Upon entering, you are welcomed into a bright entrance hall featuring Karndean flooring and stairs to the first floor. The ground floor offers a re-fitted cloakroom and a study, ideal for home working. The generously extended lounge features a charming fireplace and opens into a separate dining room via double doors, perfect for entertaining and hosting guests. The dining room also provides access to the private rear garden.

The expansive kitchen boasts a range of fitted eye and base level units with appliances, complemented by a separate utility room with a sink and space for laundry duties. Additional ground floor highlights include a conservatory and an integral garage offering potential for conversion into additional living or bedroom space.

£600,000

- Nova Estate Agents
- Press Play Button For 360° Walkaround Tour
- Heavily Extended Detached Home
- 2 En-suite's
- Popular Wigmore Location
- Conservatory
- Driveway Parking & Garage
- Private Garden
- Spacious Bedrooms
- Study



This floorplan is only for illustrative purposes and is not to scale. Measurements of rooms, doors, windows, and any items are approximate and no responsibility is taken for any error, omission or mis-statement. Icons of items such as bathroom suites are representations only and may not look like the real items. Made with Made Snappy 360.

Energy Efficiency Rating		
	Current	Potential
Very energy efficient - lower running costs		
(92 plus) A		
(81-91) B		
(69-80) C		
(55-68) D		
(39-54) E		
(21-38) F		
(1-20) G		
Not energy efficient - higher running costs		
England & Wales		EU Directive 2002/91/EC 