



Heather Apartments, Apartment 20 1 Cypress Road, Luton, LU1 4FY

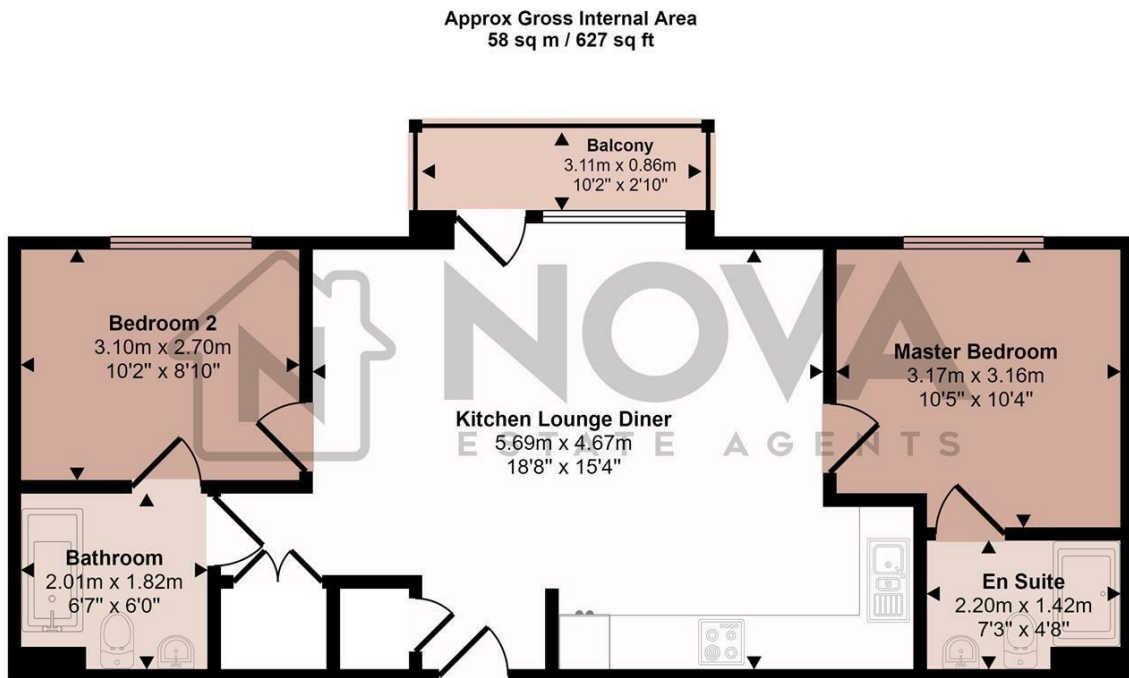
This beautifully presented two bedroom apartment, built in 2021 is located in the highly sought after Stockwood Gardens development. The property being only a few years old is still 'like new' and boasts a spacious and light filled open plan kitchen, lounge, and dining area seamlessly opening onto a balcony with serene views of Stockwood Gardens golf course.

The apartment features a large principal bedroom with an en-suite shower room, and a generously sized second double bedroom with convenient Jack & Jill access to the family bathroom. The kitchen is equipped with integrated appliances, adding to the property's many modern conveniences.

Additional benefits include allocated parking, visitor parking, and access to well maintained communal gardens. The property is still under warranty, offering peace of mind, and comes with a long lease of 246 years remaining. Ground rent is set at a peppercorn rate, and the service charge

- Nova Estate Agents
- Modern 2 Bedroom Apartment Built in 2021
- Stockwood Gardens Development
- Spacious Open Plan Kitchen, Lounge and Dining Area
- En-suite to Master Bedroom
- Long Lease
- Close to Transport Links and Local Amenities

£250,000



Floorplan

This floorplan is only for illustrative purposes and is not to scale. Measurements of rooms, doors, windows, and any items are approximate and no responsibility is taken for any error, omission or mis-statement. Icons of items such as bathroom suites are representations only and may not look like the real items. Made with Made Snappy 360.

