



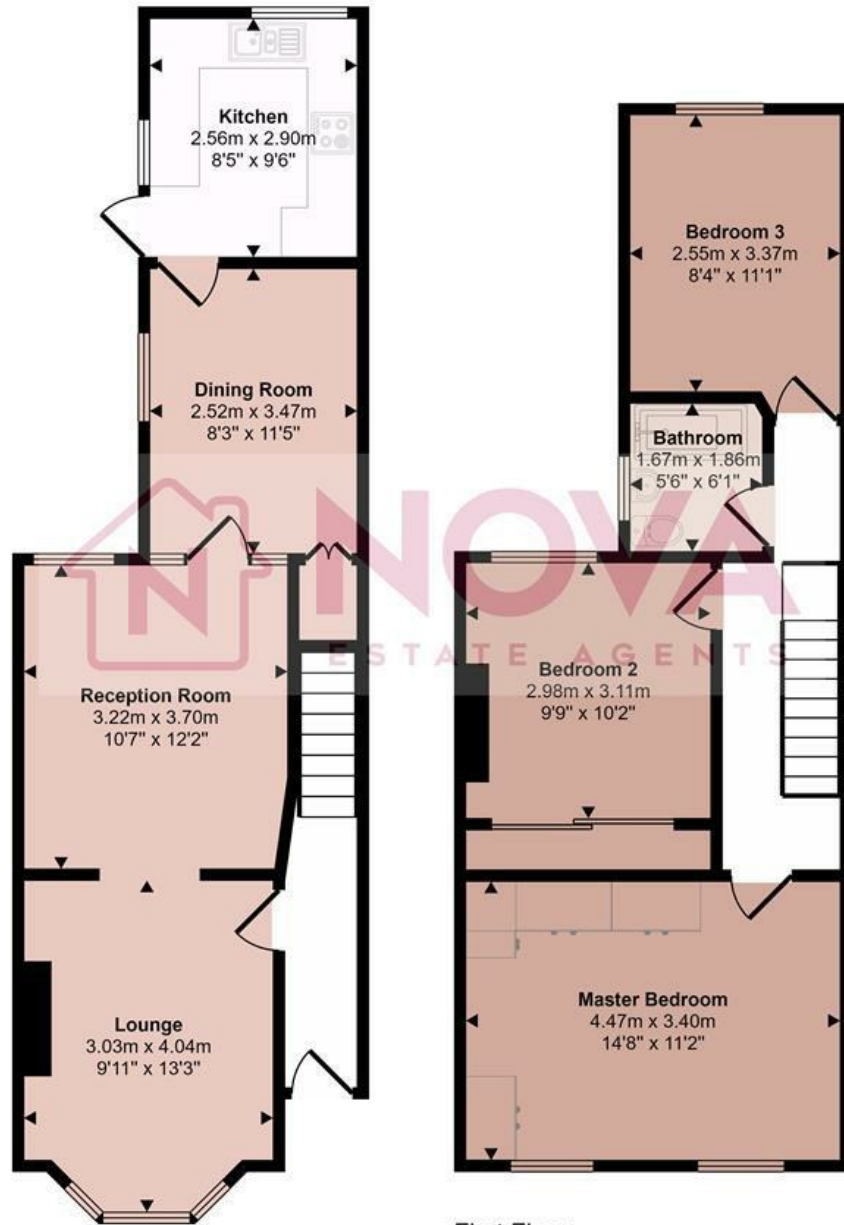
67 Naseby Road, Luton, Bedfordshire, LU1 1LE

Welcome to Naseby Road, where elegance and convenience converge in this immaculate 3-bedroom, 3-reception mid-terrace house, situated in the highly sought-after Dallow Road area. Boasting pristine condition, this home offers a spacious canvas for your personal style, with ample living space across three reception rooms and cosy bedrooms, perfect for families or hosting guests. The modern kitchen awaits your culinary creations, while the tranquil rear garden provides an oasis for outdoor enjoyment. Plus, enjoy the convenience of built-in wardrobes in the bedrooms, offering ample storage space and organisational ease. With great schools, family parks, and the vibrant town center just a short walk away, this residence offers the ideal blend of comfort and accessibility. This house is perfect for growing family or would lend itself to an in demand buy-to-let. Call us now to arrange a viewing.

- Nova Estate Agents
- Immaculate property
- 3 Reception Rooms
- 3 Large Double Bedrooms
- Fitted Wardrobes
- Modern Kitchen
- Rear Garden
- Close to Parks and Schools
- 10 Minute walk to the Town Center

£300,000

Approx Gross Internal Area
94 sq m / 1007 sq ft



Ground Floor
Approx 47 sq m / 504 sq ft

First Floor
Approx 47 sq m / 503 sq ft

This floorplan is only for illustrative purposes and is not to scale. Measurements of rooms, doors, windows, and any items are approximate and no responsibility is taken for any error, omission or mis-statement. Icons of items such as bathroom suites are representations only and may not look like the real items. Made with Made Snappy 360.

Energy Efficiency Rating		Current	Potential
Very energy efficient - lower running costs			
(92 plus) A			87
(81-91) B			
(69-80) C		67	
(55-68) D			
(39-54) E			
(21-38) F			
(1-20) G			
Not energy efficient - higher running costs			
England & Wales		EU Directive 2002/91/EC	