



15 Holford Way, Luton, Bedfordshire, LU3 4EA

Introducing a stunning 4 bedroom detached home on the highly sought after Holford Way in Barton Hills, Luton. This immaculate property offers everything you could wish for. Enjoy a bright and airy conservatory, perfect for relaxation, and a spacious fully fitted kitchen with a breakfast room ideal for family meals. The separate lounge and dining room provide versatile living spaces, while the convenient downstairs cloakroom adds practicality.

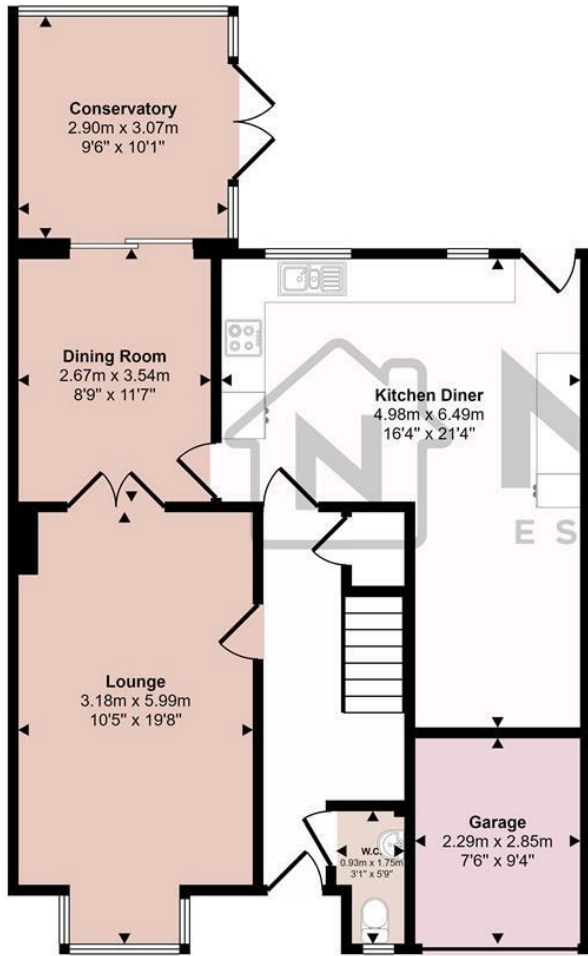
The luxurious master bedroom features its own en-suite, with three additional double bedrooms upstairs, a large family bathroom and a landing with a storage cupboard completing the upstairs. The beautifully maintained rear garden is perfect for outdoor entertaining. With a garage, ample parking, and the advantage of being chain free, this will get snapped up quickly.

Don't miss out on this exceptional property, viewings are highly recommended! Contact Nova Estate Agents today to arrange yours.

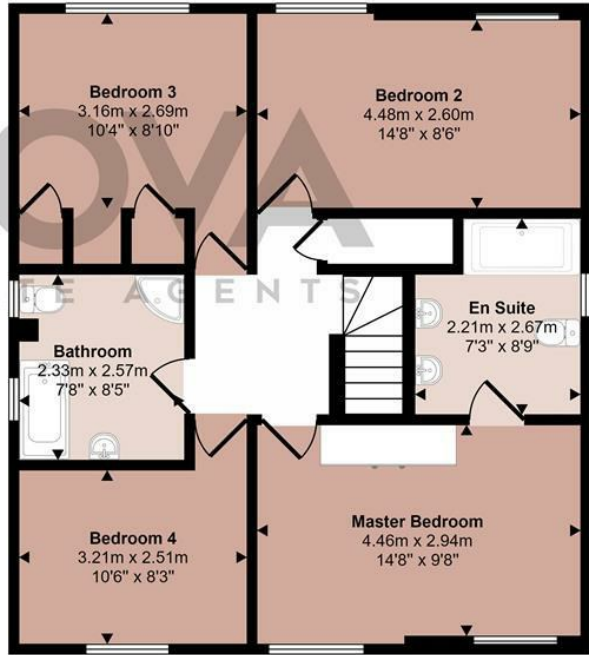
£500,000

- Nova Estate Agents
- Press Play Button For 360° Walkaround Tour
- Chain Free
- Garage
- Driveway for 3 Cars
- Conservatory
- En-suite To Master Bedroom
- Downstairs Cloakroom
- 4 Double Bedrooms
- Detached Home

Approx Gross Internal Area
149 sq m / 1601 sq ft



Ground Floor
Approx 81 sq m / 869 sq ft



First Floor
Approx 68 sq m / 732 sq ft

This floorplan is only for illustrative purposes and is not to scale. Measurements of rooms, doors, windows, and any items are approximate and no responsibility is taken for any error, omission or mis-statement. Icons of items such as bathroom suites are representations only and may not look like the real items. Made with Made Snappy 360.

