



## 7 Ravensthorpe, Luton, LU2 8AU

Set in a sought after cul-de-sac in the popular Putteridge area of Luton, is this charming Janes style two bedroom home.

Upon entering, you are welcomed by a spacious living room with a feature fireplace. The well equipped kitchen boasts ample wall and base units, seamlessly connecting to the rear extension currently used as a lounge area, which can easily be utilised as a dining room. Additionally, the ground floor offers a modern three piece shower room.

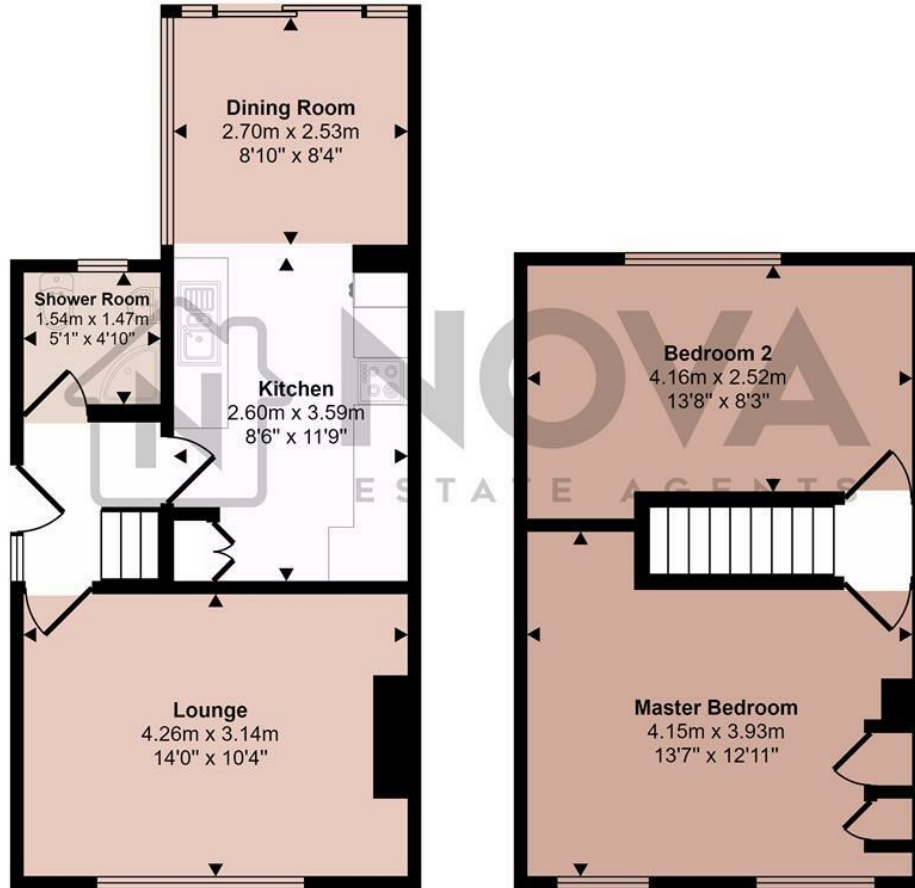
Upstairs, there are two generously sized double bedrooms, with the main bedroom offering the potential to add an en-suite, a popular upgrade for homes of this style.

Externally, the front of the property features a lovely garden area and a long driveway leading to a detached garage. The rear garden is tranquil with a decking area, mature shrubs, trees, and a

- Nova Estate Agents
- Popular Putteridge Area
- Two Double Bedrooms
- Garage
- Driveway for Multiple Cars
- Extended
- Close to Local Amenities
- Lots of Potential for Further Expansion
- Press Play Button For 360° Walkaround Tour

£290,000

Approx Gross Internal Area  
65 sq m / 701 sq ft



Ground Floor  
Approx 37 sq m / 394 sq ft

First Floor  
Approx 28 sq m / 306 sq ft

This floorplan is only for illustrative purposes and is not to scale. Measurements of rooms, doors, windows, and any items are approximate and no responsibility is taken for any error, omission or mis-statement. Icons of items such as bathroom suites are representations only and may not look like the real items. Made with Made Snappy 360.

