

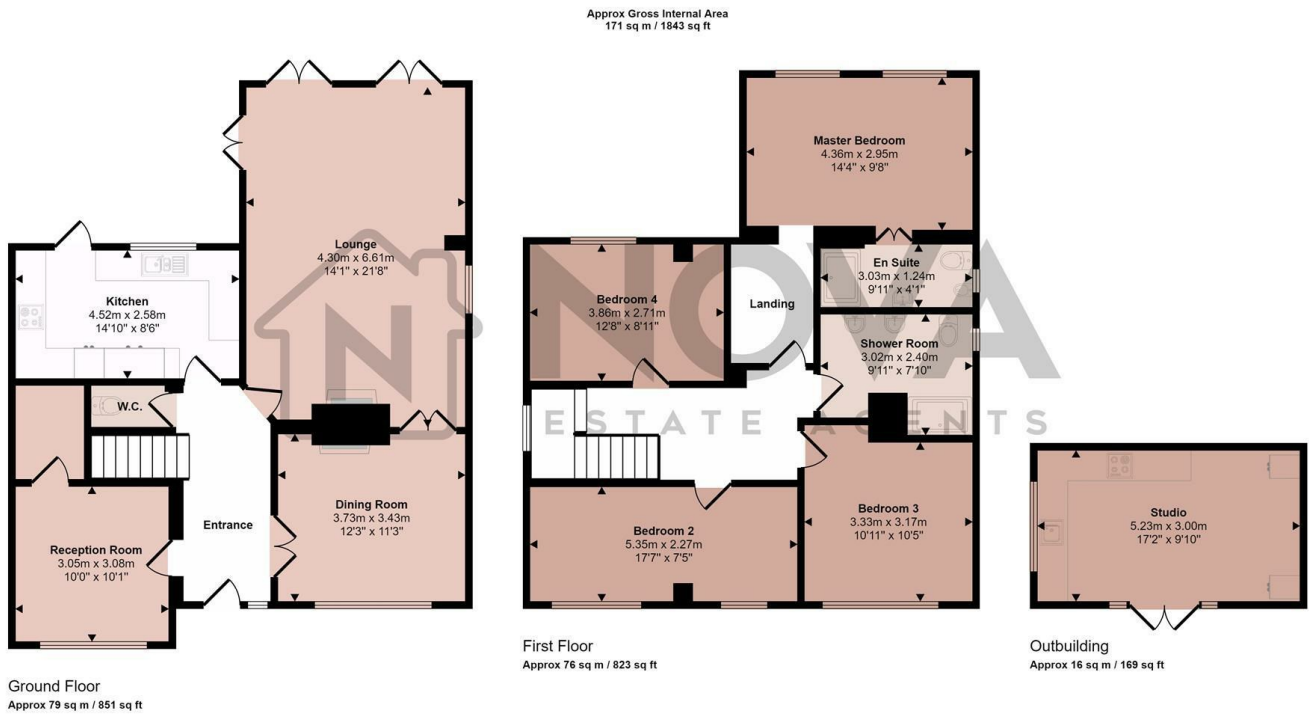


27 Bushmead Road, Luton, Bedfordshire, LU2 7EU

Discover your dream home on Bushmead Road with this exceptional 4 bedroom detached house that has been completely renovated to the highest standard. This property combines modern luxury with comfortable living, offering spacious and beautifully designed double bedrooms, including a master bedroom with an en-suite, and a large family bathroom. The sleek, contemporary kitchen is equipped with top of the line appliances, while the three versatile reception rooms are perfect for entertaining guests or relaxing with family. Additional conveniences include a downstairs cloakroom and a driveway for four cars. The expansive outdoor space features a large garden, a charming summer house, and a beautiful pergola dining area for alfresco dining and entertaining. Located in a brilliant area with great schools and amenities nearby, this chain free sale ensures both convenience and quality of life. Don't miss out on this incredible opportunity to make this stunning house your home. Contact Nova Estate Agents today to arrange a viewing!

- Nova Estate Agents
- Executive 4 Bedroom Detached Home
- Immaculately Refurbished
- Large Stunning Garden with Mature Trees and Shrubs
- Beautiful Pergola Dining Area
- Fully Fitted Summer Outhouse
- En-suite to Master Bedroom
- Downstair Cloakroom
- Large Drive For 4 Cars
- Prestigious Bushmead Area

£800,000



This floorplan is only for illustrative purposes and is not to scale. Measurements of rooms, doors, windows, and any items are approximate and no responsibility is taken for any error, omission or mis-statement. Icons of items such as bathroom suites are representations only and may not look like the real items. Made with Mede Snappy 360.

Energy Efficiency Rating		Current	Potential
Very energy efficient - lower running costs			
(92 plus) A			
(81-91) B		83	89
(69-80) C			
(55-68) D			
(39-54) E			
(21-38) F			
(1-20) G			
Not energy efficient - higher running costs			
England & Wales	EU Directive 2002/91/EC		