



64 Sunningdale, Luton, LU2 7TE

Nova is pleased to present this charming, two bedroom property in Round Green, in need of modernisation this spacious home features a lounge, open plan kitchen/diner, conservatory, good size rear garden and garage.

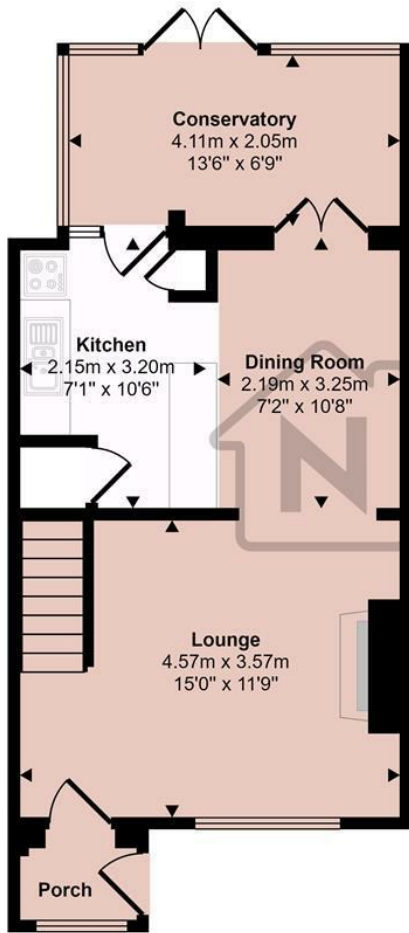
Upstairs there are two large double bedrooms and a family bathroom. Ideally located, it is a short walk to Stopsley Village and Round Green, where you'll find various shops, eateries, and local pubs. It is also close to local schools and just a 5 minute drive from Luton Airport, with direct trains to St Pancras in 20 minutes.

Get in contact with Nova today to arrange a viewing,

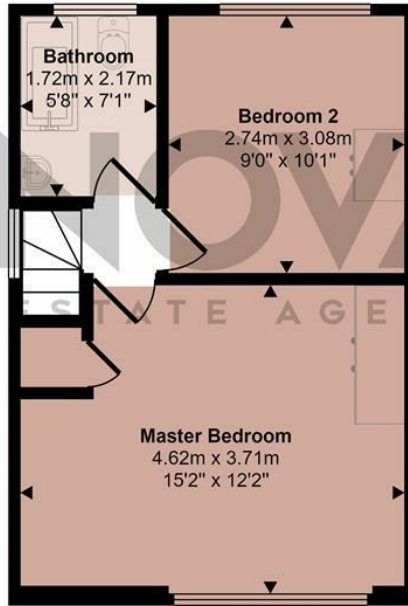
- Nova Estate Agents
- Popular Round Green Location
- Two Large Double Bedrooms
- Conservatory
- Driveway & Garage
- In Need of Modernisation

£250,000

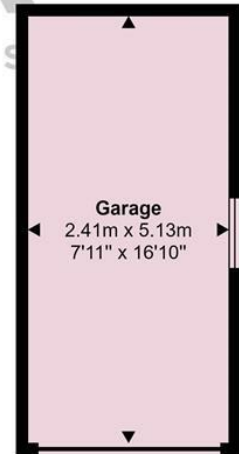
Approx Gross Internal Area
87 sq m / 936 sq ft



Ground Floor
Approx 43 sq m / 458 sq ft



First Floor
Approx 32 sq m / 345 sq ft



Garage
Approx 12 sq m / 133 sq ft

This floorplan is only for illustrative purposes and is not to scale. Measurements of rooms, doors, windows, and any items are approximate and no responsibility is taken for any error, omission or mis-statement. Icons of items such as bathroom suites are representations only and may not look like the real items. Made with Made Snappy 360.

Energy Efficiency Rating		
	Current	Potential
Very energy efficient - lower running costs		
(92 plus) A		
(81-91) B		
(69-80) C		
(55-68) D		
(39-54) E		
(21-38) F		
(1-20) G		
Not energy efficient - higher running costs		
England & Wales	EU Directive 2002/91/EC	