



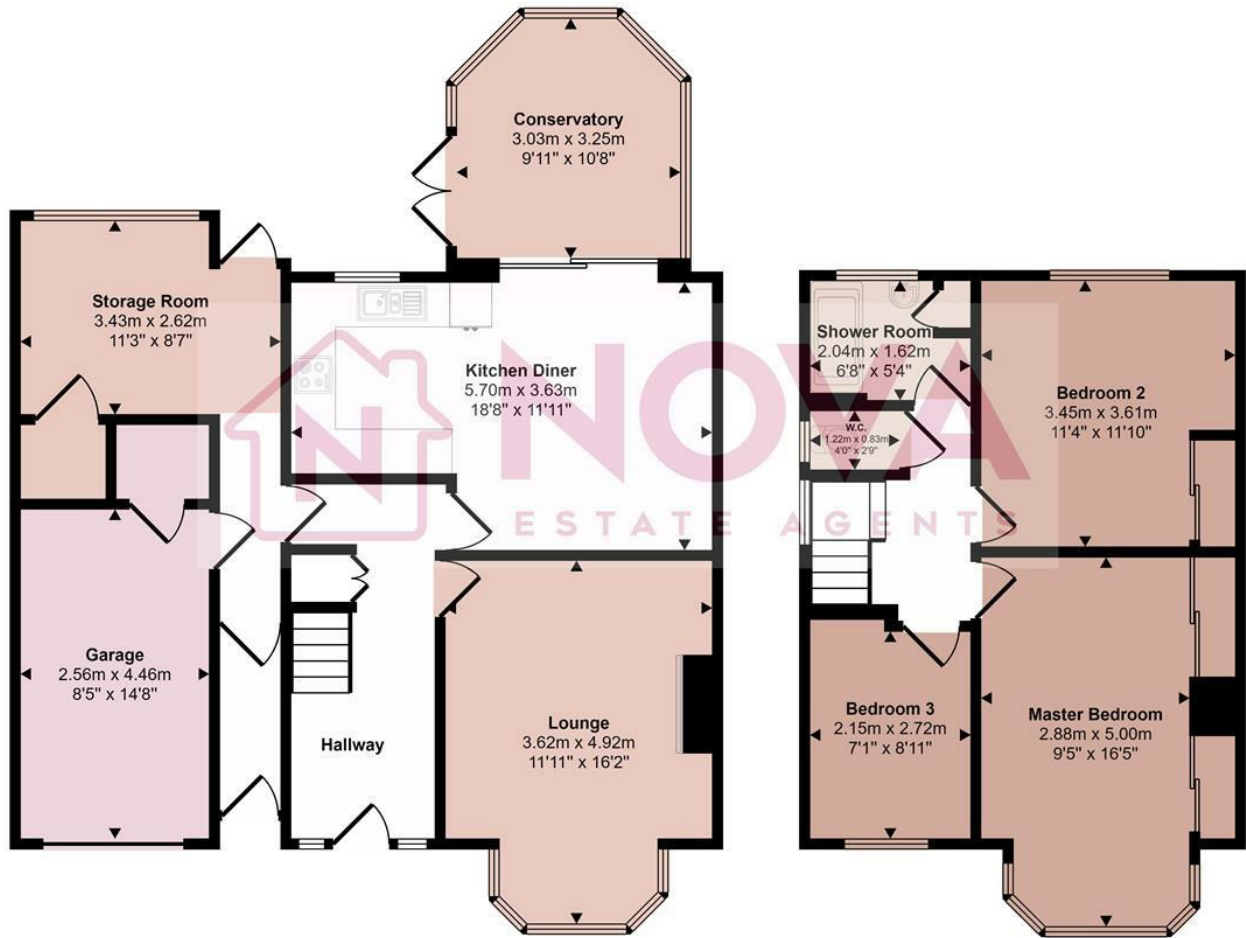
13 Greenways, Luton, LU2 8BL

A desirable modern semi-detached family residence with three bedrooms situated in the highly sought after Putteridge area. This fully furnished property features a generously sized living room, an open plan kitchen/diner with a newly fitted kitchen, two double bedrooms, a single bedroom, a shower room, and a separate toilet. Additionally, it boasts a conservatory opening to a larger than average rear garden, a brick-built storage shed and garage to the side with plenty of storage space. Additional benefits include gas central heating, double glazed windows and driveway parking.

- Nova Estate Agents
- Spacious Home
- Modern Decor
- Available Now
- Large Garden
- Open Plan Kitchen/Diner
- Garage

£1,900 Per month

Approx Gross Internal Area
131 sq m / 1413 sq ft



Ground Floor
Approx 85 sq m / 913 sq ft

First Floor
Approx 47 sq m / 501 sq ft

This floorplan is only for illustrative purposes and is not to scale. Measurements of rooms, doors, windows, and any items are approximate and no responsibility is taken for any error, omission or mis-statement. Icons of items such as bathroom suites are representations only and may not look like the real items. Made with Made Snappy 360.

Energy Efficiency Rating		Current	Potential
Very energy efficient - lower running costs			
(92 plus) A			85
(81-91) B			
(69-80) C		69	
(55-68) D			
(39-54) E			
(21-38) F			
(1-20) G			
Not energy efficient - higher running costs			
England & Wales		EU Directive 2002/91/EC	