



104 Hill Rise, Luton, LU3 3EF

Located within the Sundon Park neighborhood of North Luton, Nova are delighted to introduce this charming semi-detached Family home. Boasting a double storey side extension and single storey rear extension which now accommodates the large kitchen with a utility area. This property offers practicality and convenience for modern living. With up to three parking spaces and a garage, there's ample room for vehicles..

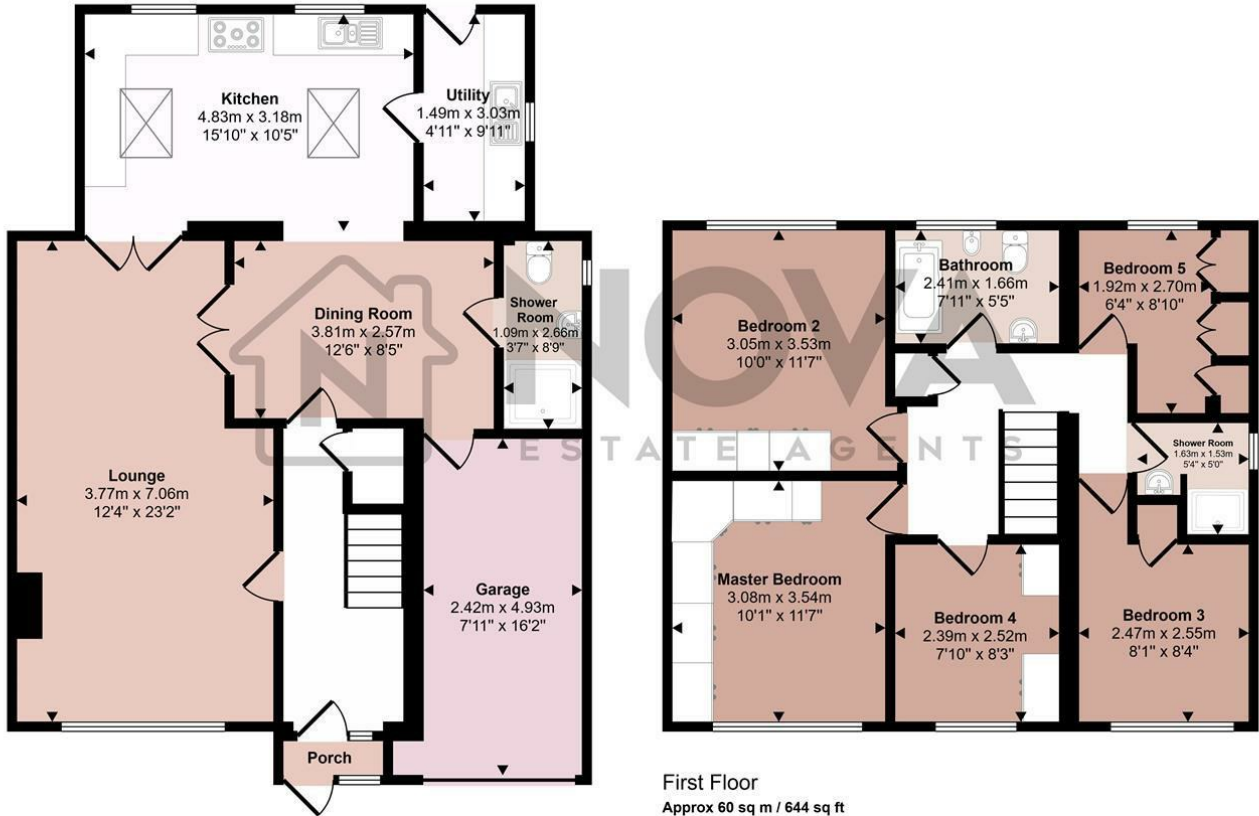
Step inside and discover a spacious living room, ideal for relaxing with family and entertaining guests. The living space seamlessly flows into the extended kitchen, creating a versatile and sociable area for cooking and dining. The kitchen is thoughtfully designed with modern fixtures and fittings, providing a stylish yet functional environment. Further benefits downstairs includes a shower room ideal for added convenience for a larger family.

Beyond the kitchen lies a tidy garden, perfect for enjoying outdoor activities or simply unwinding

- Nova Estate Agents
- Five Bedrooms
- Heavily Extended
- Three Bathrooms
- Garage & Driveway
- Close to Transport Links
- Press Play Button For 360° Walkaround Tour

£425,000

Approx Gross Internal Area
143 sq m / 1539 sq ft



Ground Floor
Approx 83 sq m / 895 sq ft

First Floor
Approx 60 sq m / 644 sq ft

This floorplan is only for illustrative purposes and is not to scale. Measurements of rooms, doors, windows, and any items are approximate and no responsibility is taken for any error, omission or mis-statement. Icons of items such as bathroom suites are representations only and may not look like the real items. Made with Made Snappy 360.

