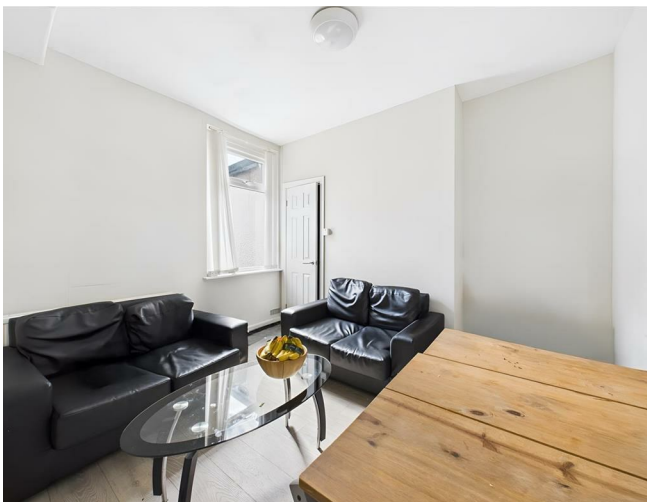


## 85 Lune Street, Lancaster, LA1 2AH



**£110 Per Week**



Head Office: 83 Bowerham Road Lancaster LA1 4AQ  
T 01524 548888 E [enquiries@mightyhouse.co.uk](mailto:enquiries@mightyhouse.co.uk) W [www.mightyhouse.co.uk](http://www.mightyhouse.co.uk)



Mighty House is a trading name of P&PC Surveyors Limited. Registered Office: 70 Daisy Hill, Dewsbury, WF13 1LS. Company no: 06498054

Spacious four bedroom student house currently available for the next academic year with ALL bills included!

Well-maintained property featuring four very spacious bedrooms and two modern bathrooms. The house is modern throughout and comes fully furnished. All bills are included, including the TV licence.

Ideally located close to Lancaster City Centre, just a 5-minute walk from the bus station and Sainsbury's supermarket.

You can secure this property for just a £400 per person deposit!

### Noposit

Some of our properties offer our Noposit option! Noposit is a hassle-free alternative to a traditional deposit, providing an opportunity to secure your house for an initial payment of just £30. Noposit is a non-refundable fee totalling £180 paid over 6 months. Please note that damage to the property is still your responsibility.

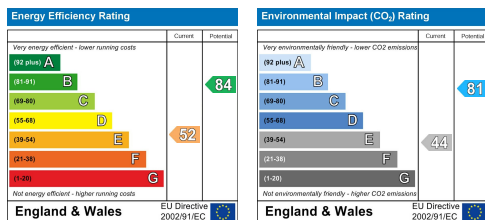
Our Noposit students benefit from enhanced contents insurance cover and you will automatically be entered into monthly draws where you can win free rent, vouchers, and more!

### Mighty Card

Our Mighty Card will grant you exclusive discounts for local businesses: coffee shops, restaurants, beauty shops etc. Visit our Mighty Card page on our website for a list of businesses offering exclusive discounts.

### Contents insurance

All our student tenants benefit from contents insurance. Details can be found on the Contents Insurance page on our website.



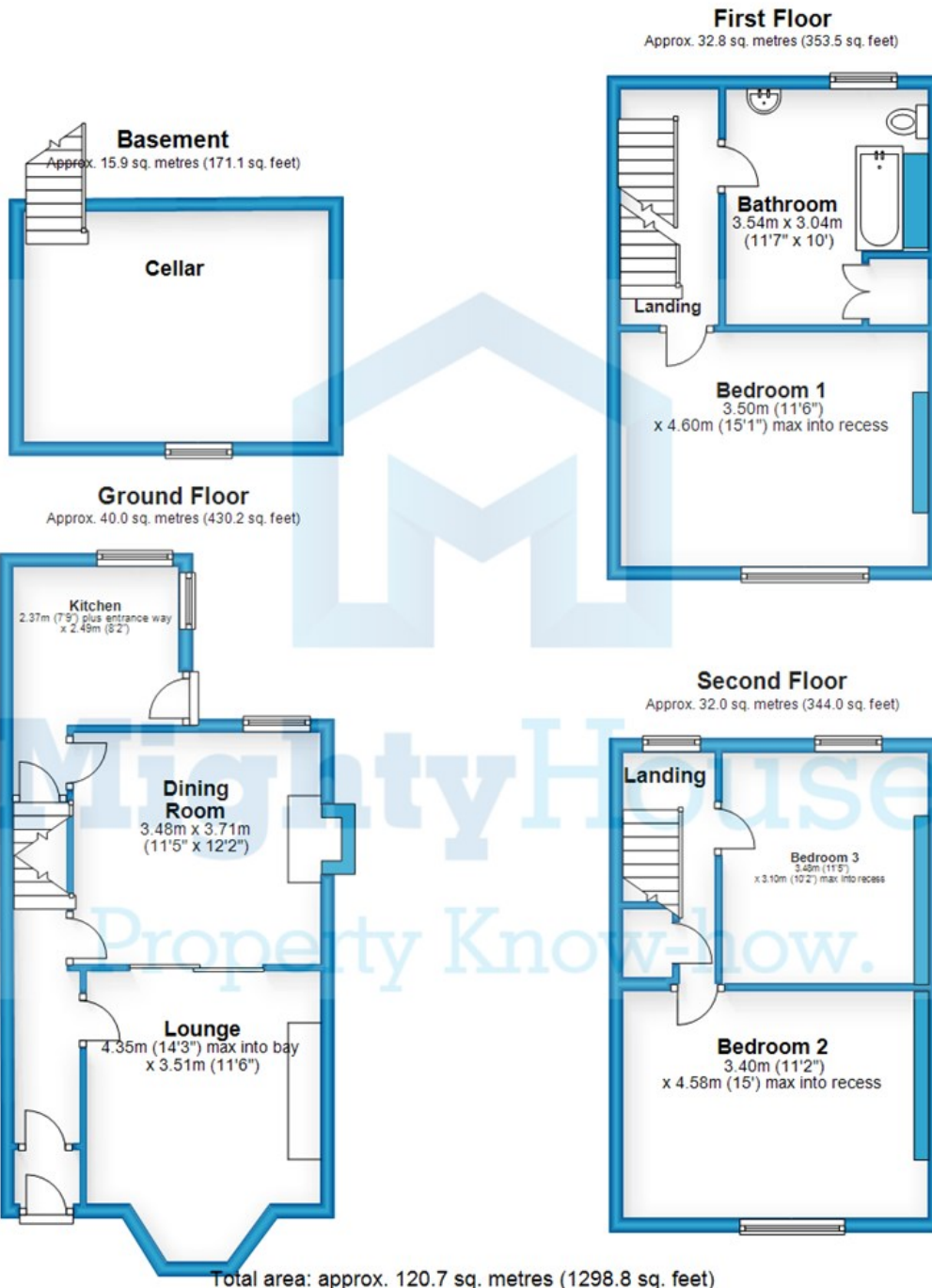
Head Office: 83 Bowerham Road Lancaster LA1 4AQ  
T 01524 548888 E [enquiries@mightyhouse.co.uk](mailto:enquiries@mightyhouse.co.uk) W [www.mightyhouse.co.uk](http://www.mightyhouse.co.uk)



the mark  
of property  
professionalism  
worldwide

Mighty House is a trading name of P&PC Surveyors Limited. Registered Office: 70 Daisy Hill, Dewsbury, WF13 1LS. Company no: 06498054





This floor plan is for illustrative purposes only and is not to scale. Where measurements are shown they are approximate and should not be relied on. No liability is accepted in respect to consequential loss arising from the use of this plan.  
Plan produced using PlanUp.