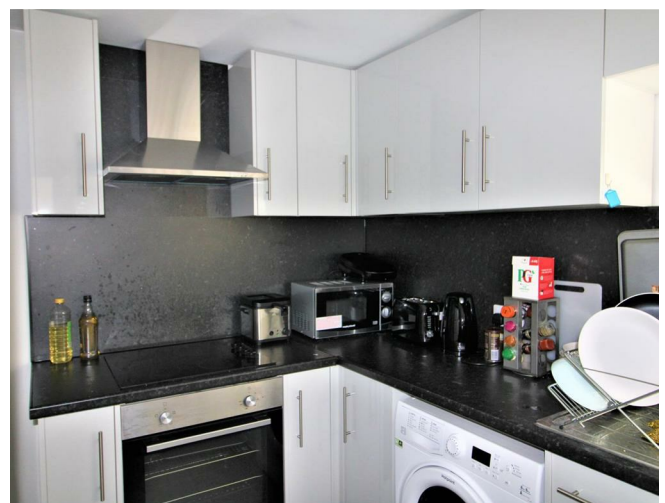
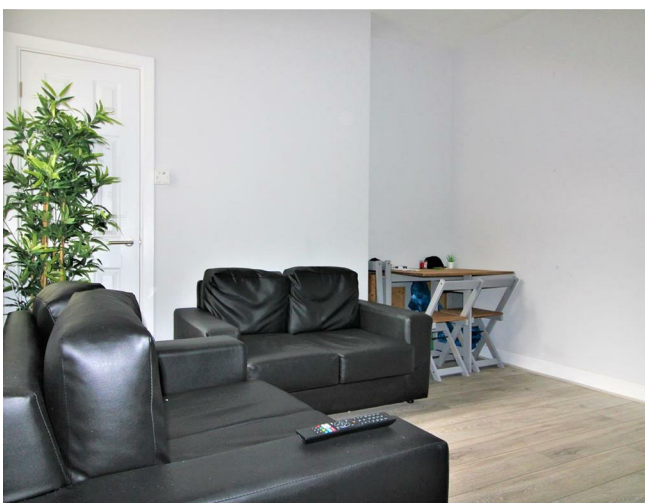


## 85 Lune Street, Lancaster, LA1 2AH



**£124 Per Week**



Head Office: 83 Bowerham Road Lancaster LA1 4AQ  
T 01524 548888 E [enquiries@mightyhouse.co.uk](mailto:enquiries@mightyhouse.co.uk) W [www.mightyhouse.co.uk](http://www.mightyhouse.co.uk)



Mighty House is a trading name of P&PC Surveyors Limited. Registered Office: 70 Daisy Hill, Dewsbury, WF13 1LS. Company no: 06498054

\*\*\* Beautiful 4 bedroom student house available for 2025-2026 academic year\*\*

This house has been modernized to a high standard throughout. . The house features 4 VERY SPACIOUS bedrooms and 2 modern bathrooms. All the house is modern and fully furnished. All bills included (TV license).

Situated very close to Lancaster City Centre, just a 5-minute walk to the bus station and Sainsbury's supermarket.

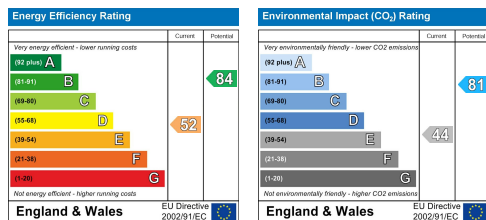
You can secure this property for just a £400 per person deposit!

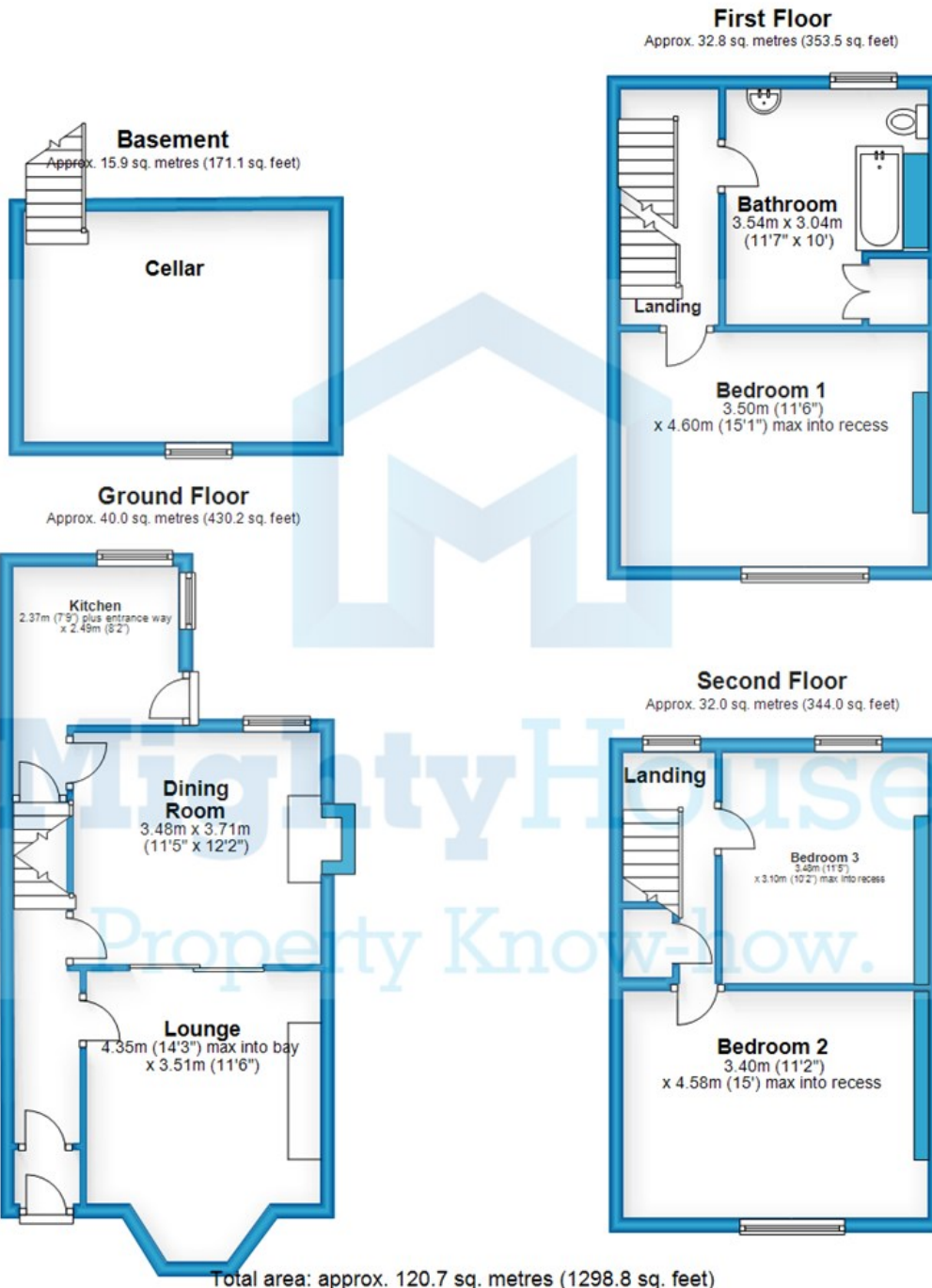
2 Parking Permits Available.

## More about living with Mighty Student Living...

All our students benefit from top level contents insurance including covering all your gadgets inside the property. What is even better is that if you choose Mighty Student Living you will also get other benefits such as the 'Mighty Card' - our local student discount card and entry to our competitions. To keep up to date with our latest giveaways, quality student houses and offers make sure to follow us on our Facebook, Twitter & Instagram page.

Give us a call today on 01524 544222 and we can schedule a viewing for you. There is more, if you come to our office, we will show you more than just one property so you can have some peace of mind that you have landed the perfect house for next year!





This floor plan is for illustrative purposes only and is not to scale. Where measurements are shown they are approximate and should not be relied on. No liability is accepted in respect to consequential loss arising from the use of this plan.  
Plan produced using PlanUp.