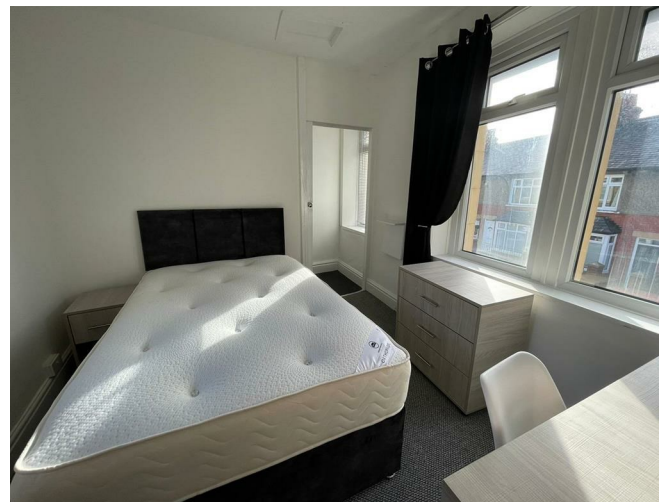


1 Sibsey Street, Lancaster, Lancashire, LA1 5DF

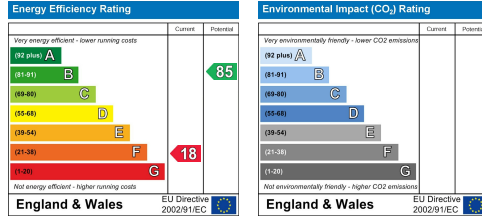


£205 Per Week

***** EXCELLENT 1 BEDROOM HOUSE For 2025/2026 Academic Year!!!*****

you are interested in the property, a physical viewing can be arranged.

This lovely house is in a great location within a 2-minute walk to the City Centre - ideal for a couple looking for a cosy home for the year or just an individual looking for plenty of space!



1x Double room, cosy living room, spacious garden, modern kitchen and bathroom!

TENANTS PAY THEIR OWN BILLS IN THIS PROPERTY.

If you're looking for a cosy city house you'll know that properties this nice do not stay available for long so get booked in for your viewing with the MSL team today!

This property is priced at a steal for £205 for a single occupancy or £235 for a double occupancy.

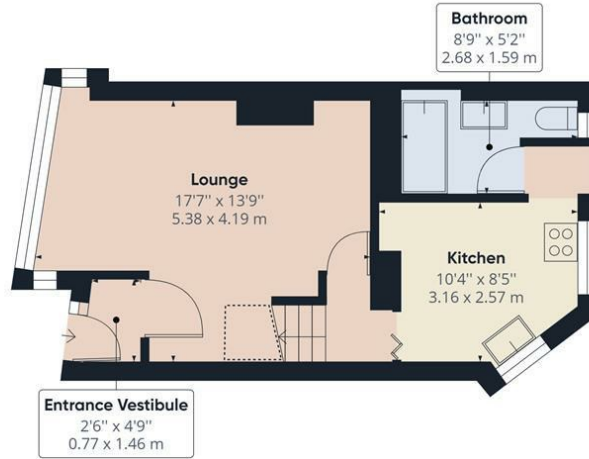
We also offer 'Noposit' instead of a traditional deposit - for all information on this, please see the Noposit page of our website:
<https://mightystudentliving.co.uk/noposit>

More about living with Mighty Student Living!

All our students benefit from top level contents insurance including covering all your gadgets inside the property. You also get the benefits of the 'Mighty Card' - our local student discount card and entry to our competitions. To keep up to date with our latest giveaways, quality student houses and offers make sure to follow us on our Facebook, Twitter & Instagram page.

Please let us know if you wish to view and we can schedule an online video viewing in the first instance. If





Ground Floor Building 1

Approximate total area⁽¹⁾
447.48 ft²
41.57 m²

Reduced headroom
13.16 ft²
1.22 m²



Floor 1 Building 1

(1) Excluding balconies and terraces

Reduced headroom
(below 1.5m/4.92ft)

While every attempt has been made to ensure accuracy, all measurements are approximate, not to scale. This floor plan is for illustrative purposes only.

GIRAFFE360