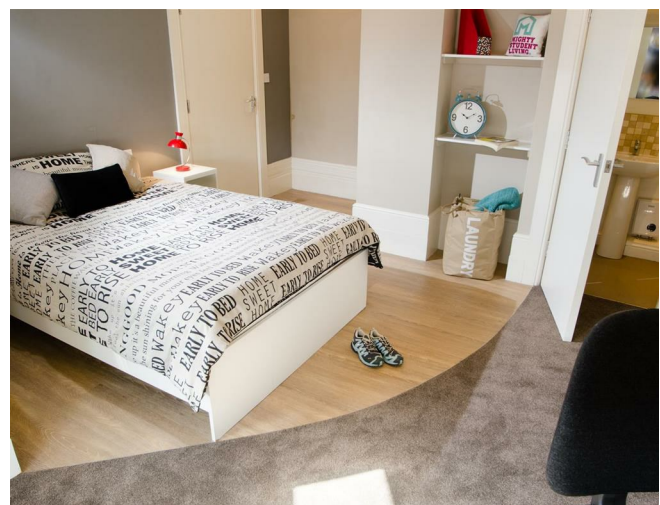


## 3 St. Oswald Street, Lancaster, Lancashire, LA1 3AS



**£149 Per Week**

**\*\*STUNNING 5 EN-SUITE  
STUDENT HOUSE AVAILABLE FOR  
2025/26\*\***

**WANT THE BEST STUDENT  
HOUSE IN LANCASTER? LOOK  
NO FURTHER!**

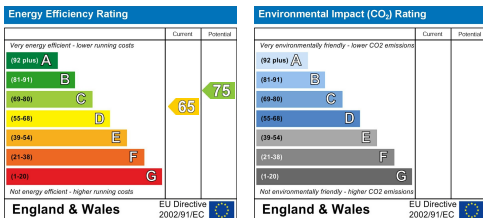
You're treated from the moment you walk in to lot's of space! Huge kitchen, dining area and modern fully fitted kitchen area giving you the space to cook up a storm! All bedrooms have great sized en suite bathrooms, no morning bathroom rush when you live here.

Situated next door to a pub for after uni beers!! Across from the University of Cumbria Campus, a short walk to the bus stop for Lancaster University and less then 10 minute walk to the city centre, it is in a great location.

All bills are included including WIFI and TV License....

**More about living with Mighty Student Living...**

Give us a call today on 01524 544 222 and we can schedule a viewing for you. There is more, if you come to our office, we will show you more than just one property so you can have some peace of mind that you have landed the perfect house for next year!



Head Office: 83 Bowerham Road Lancaster LA1 4AQ  
 T 01524 548888 E [enquiries@mightyhouse.co.uk](mailto:enquiries@mightyhouse.co.uk) W [www.mightyhouse.co.uk](http://www.mightyhouse.co.uk)



Mighty House is a trading name of P&PC Surveyors Limited. Registered Office: 70 Daisy Hill, Dewsbury, WF13 1LS. Company no: 06498054



Head Office: 83 Bowerham Road Lancaster LA1 4AQ  
T 01524 548888 E [enquiries@mightyhouse.co.uk](mailto:enquiries@mightyhouse.co.uk) W [www.mightyhouse.co.uk](http://www.mightyhouse.co.uk)



Mighty House is a trading name of P&PC Surveyors Limited. Registered Office: 70 Daisy Hill, Dewsbury, WF13 1LS. Company no: 06498054