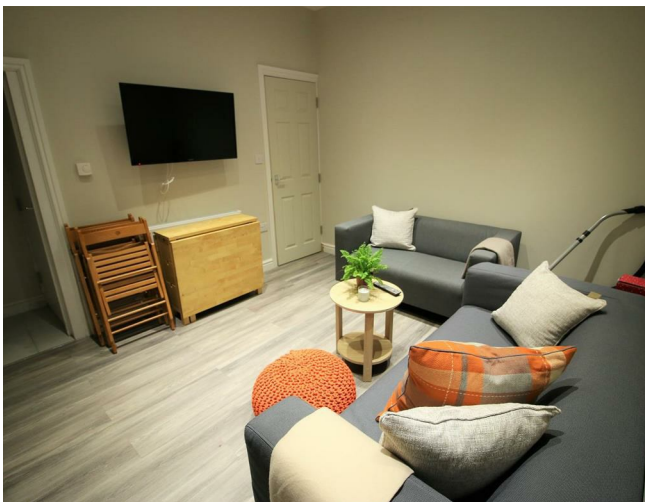


35 Lune Street, Lancaster, Lancashire, LA1 2AJ



£130 Per Week

AMAZING 5 BEDROOM 4 BATHROOM STUDENT PROPERTY AVAILABLE 2025/26

Gorgeous recently refurbished 5 Bedroom house available for 2025-2026! This house features 5 gorgeous double bedrooms, 2 bathrooms. 2 of the bedrooms have en-suites, meaning that 3 rooms will be sharing 2 bathrooms.

Situated very close to Lancaster City Centre, just 5 minutes walk to the bus station and Sainsbury's supermarket.

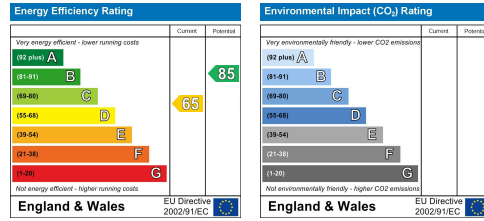
The rent is £130 per week (£150 for the en-suite), including all bills! This house will be booked quickly, call to arrange your viewing today!

We also offer 'Noposit' instead of a traditional deposit - for all information on this, please see the Noposit page of our website:
<https://mightystudentliving.co.uk/noposit>

More about living with Mighty Student Living...

All our students benefit from top level contents insurance including covering all your gadgets inside the property. You also get the benefits of the 'Mighty Card' - our local student discount card and entry to our competitions. To keep up to date with our latest giveaways, quality student houses and offers make sure to follow us on our Facebook, Twitter & Instagram page.

Please call us today on 01524 544222 or request a viewing online and we can schedule a viewing for you. We can also show you around 2 other properties we recommend on each viewing so you can have some peace of mind that you have landed the perfect house for next year!





Head Office: 83 Bowerham Road Lancaster LA1 4AQ
T 01524 548888 E enquiries@mightyhouse.co.uk W www.mightyhouse.co.uk



Mighty House is a trading name of P&PC Surveyors Limited. Registered Office: 70 Daisy Hill, Dewsbury, WF13 1LS. Company no: 06498054