

3 Coulston Road, Bowerham, Lancaster, Lancashire,



£99 Per Week



Head Office: 83 Bowerham Road Lancaster LA1 4AQ
T 01524 548888 E enquiries@mightyhouse.co.uk W www.mightyhouse.co.uk



Mighty House is a trading name of P&PC Surveyors Limited. Registered Office: 70 Daisy Hill, Dewsbury, WF13 1LS. Company no: 06498054

SPACIOUS 4 BEDROOM
STUDENT HOUSE AVAILABLE FOR
2025/2026!

*NOW JUST £99 PER WEEK -
BILLS INCLUDED!*

2 WEEKS FREE RENT

This student pad has a large lounge, kitchen, steps down to utility rooms and cloakroom. This property also comes with a large pull out dining table and chairs set perfect for evening meals as a group or studying together. The first floor has three bedrooms and a bathroom. The house is in TOP student location Bowerham. It's within easy reach of local shops, bus links, Universities, the city centre, Williamson park and much more!

The house comes with all bills included as well as with insurance for your gadgets. Book your viewing today!

ALL BILLS INCLUDED!

We also offer 'Noposit' instead of a traditional deposit - for all information on this, please see the Noposit page of our website:
<https://mightystudentliving.co.uk/noposit>

Noposit

Some of our properties offer our Noposit option! Noposit is a hassle-free alternative to a traditional deposit, providing an opportunity to secure your house for an initial payment of just £30. Noposit is a non-refundable fee totalling £180 paid over 6 months. Please note that damage to the property is still your responsibility.

Our Noposit students benefit from enhanced contents insurance cover and you will automatically be entered

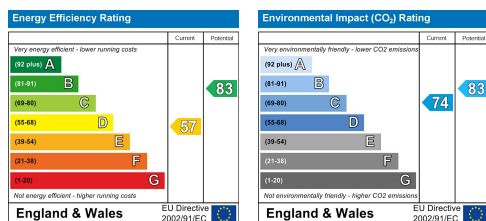
into monthly draws where you can win free rent, vouchers, and more!

Mighty Card

Our Mighty Card will grant you exclusive discounts for local businesses: coffee shops, restaurants, beauty shops etc. Visit our Mighty Card page on our website for a list of businesses offering exclusive discounts.

Contents insurance

All our student tenants benefit from contents insurance. Details can be found on the Contents Insurance page on our website.

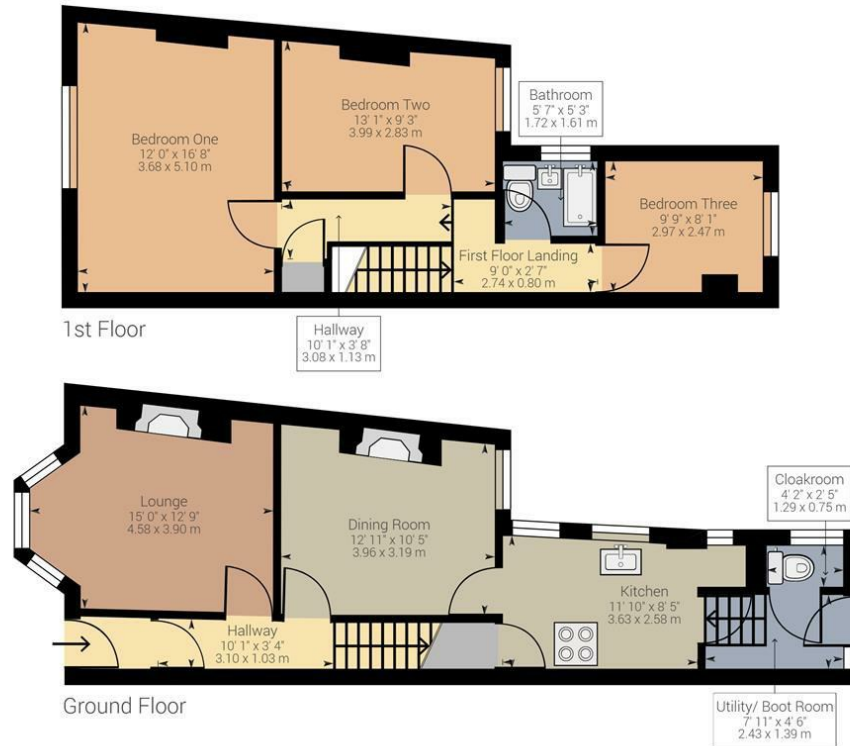


Head Office: 83 Bowerham Road Lancaster LA1 4AQ
T 01524 548888 E enquiries@mightyhouse.co.uk W www.mightyhouse.co.uk



the mark
of property
professionalism
worldwide

Mighty House is a trading name of P&PC Surveyors Limited. Registered Office: 70 Daisy Hill, Dewsbury, WF13 1LS. Company no: 06498054



Approximate net internal area: 1028.14 ft² / 95.52 m²

While every attempt has been made to ensure accuracy, all measurements are approximate, not to scale. This floor plan is for illustrative purpose only and should be used as such by any prospective tenant or purchaser.

Powered by Giraffe360