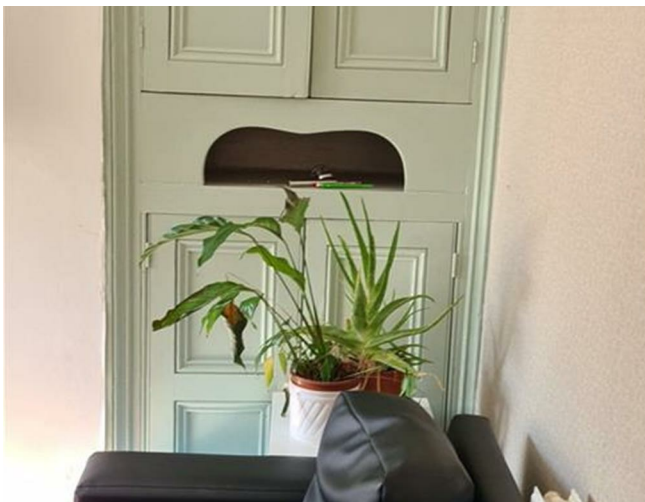


29 Lune Street, Lancaster, Lancashire, LA1 2AJ



£110 Per Week

*** Amazing 4 bedroom property available for 2024-2025 academic year***

FREE TAKEAWAY AND WINE/BEERS FOR YOU WHEN YOU MOVE IN!!!!

All Bills included!!! (excluding council tax)

The property has recently been redecorated and the house has been fully modernized to a high standard throughout. It is very rare to find in a student property that there is a separate kitchen and living/dining area so there is plenty of space to relax and socialize. All bedrooms are extremely spacious and are equipped with a double bed, wardrobe, chest of drawers and a desk/chair. The bathroom also features a separate bath and shower.

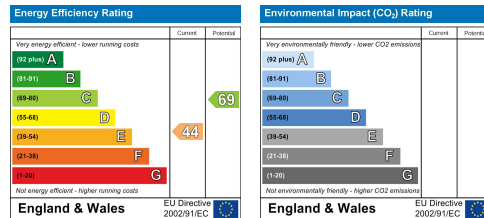
Situated very close to Lancaster City Centre, just a 5-minute walk to the bus station and Sainsbury's supermarket.

The rent is £110 per week (per person), including all bills! If you are a professional then there will be an additional charge for council tax.

More about living with Mighty Student Living...

All our students benefit from top level contents insurance including covering all your gadgets inside the property. What is even better is that if you choose Mighty Student Living you will also get other benefits such as the 'Mighty Card' - our local student discount card and entry to our competitions. To keep up to date with our latest giveaways, quality student houses and offers make sure to follow us on our Facebook, Twitter & Instagram page.

Give us a call today on 01524 544222 and we can schedule a viewing for you. There is more, if you come to our office, we will show you more than just one property so you can have some peace of mind that you have landed the perfect house for next year!





Head Office: 83 Bowerham Road Lancaster LA1 4AQ
T 01524 548888 E enquiries@mightyhouse.co.uk W www.mightyhouse.co.uk



Mighty House is a trading name of P&PC Surveyors Limited. Registered Office: 70 Daisy Hill, Dewsbury, WF13 1LS. Company no: 06498054