

**Shaw  
& Co**  
ESTATE  
AGENTS

**£625,000**

**Heath Road**

Hounslow, TW3 2NJ

**Shaw  
& Co**



## PROPERTY SUMMARY

Shaw & Co are delighted to present this substantially extended six-bedroom Victorian HMO property.

This impressive home has been massively extended to the rear and offers spacious, flexible accommodation throughout, with further potential for development (STPP).

On the ground floor, the property features four generous double bedrooms, a large fitted kitchen, and a well-appointed bathroom.

The first floor comprises two further larger-than-average bedrooms, a separate shower room, a W/C, and a large storage room that could offer additional conversion potential. There is also scope to further extend into the loft (STPP), providing the opportunity to create additional living space or bedrooms and bathroom.

Externally, the property benefits from a shared driveway providing access to the substantial rear garden, which offers ample space for parking and outdoor use.

Located in a desirable residential area, this property represents an excellent investment opportunity or an ideal purchase for those seeking a large family home with further potential.

6



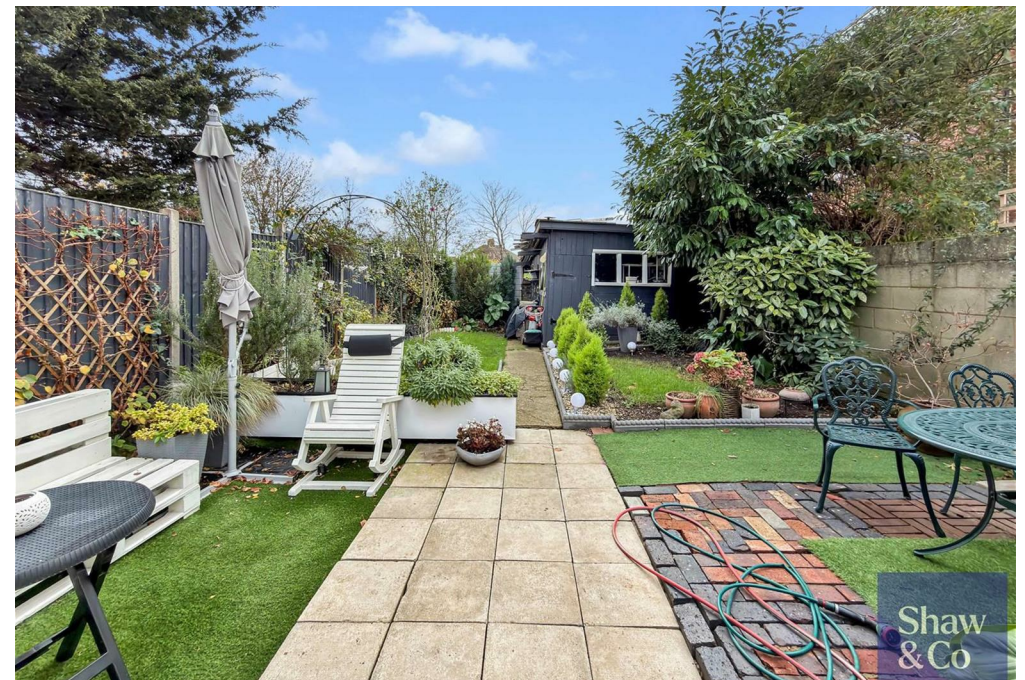
2



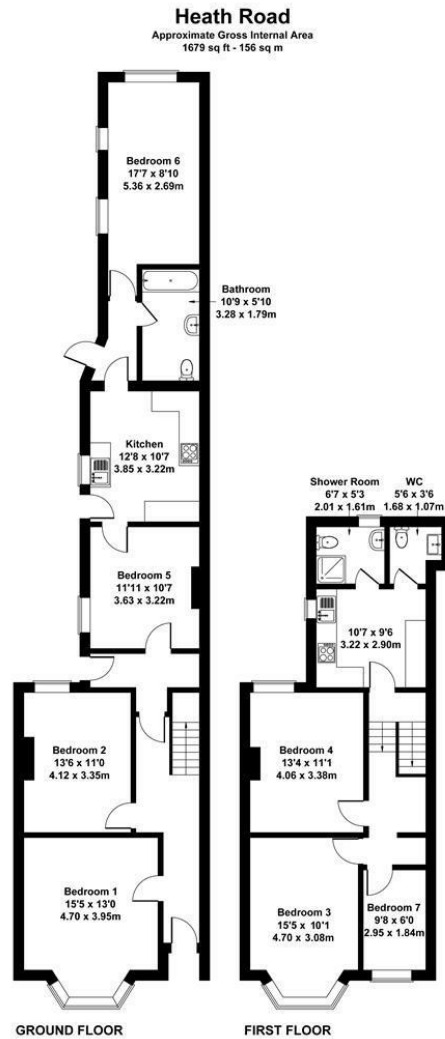
2











**Shaw  
& Co**

## LOCAL AUTHORITY

Hounslow

## TENURE

Freehold

## COUNCIL TAX BAND

F

## VIEWINGS

By prior appointment only

Energy Efficiency Rating		
	Current	Potential
Very energy efficient - lower running costs		
(92 plus) <b>A</b>		
(81-91) <b>B</b>		
(69-80) <b>C</b>		80
(55-68) <b>D</b>		
(39-54) <b>E</b>	59	
(21-38) <b>F</b>		
(1-20) <b>G</b>		
Not energy efficient - higher running costs		
England & Wales	EU Directive 2002/91/EC	



Agents Note: Whilst every care has been taken to prepare these particulars, they are for guidance purposes only. All measurements are approximate and are for general guidance purposes only and whilst every care has been taken to ensure their accuracy, they should not be relied upon and potential buyers/tenants are advised to recheck the measurements

**Shaw  
& Co**  
ESTATE  
AGENTS

## OFFICE ADDRESS

Whitton  
Twickenham  
TW2 7LT

## OFFICE DETAILS

0208 894 3646  
whitton@shawandcoestates.com