

**£695,000**

**Woodlawn Crescent**

Twickenham, TW2 6BE



## PROPERTY SUMMARY

A charming and well-presented three-bedroom semi-detached bungalow, ideal for those seeking the ease of single-level living. Offered with no onward chain!

The property has been lovingly maintained over the years and is offered in excellent condition throughout. At its heart is a fully renovated kitchen/breakfast room, filled with natural light and enjoying pleasant views across the rear garden. A bright conservatory extends the living space, while a generous lounge and dining area provides plenty of room for both everyday living and entertaining. Three comfortable bedrooms and a family bathroom complete the internal layout.

The home is set back behind wrought-iron gates, with a generous driveway providing ample parking. Side access leads to a private rear garden, and to the rear of the plot sits a large detached outbuilding. Equipped with power and lighting, it offers outstanding versatility as a workshop, home office, studio, or playroom.

Woodlawn Crescent is well placed at the Whitton Town end of the Woodlawn Estate. The area is renowned for its outstanding schools within the Richmond catchment, together with a good choice of leisure amenities and green spaces, making it a highly desirable setting for families. Whitton High Street, with its shops and railway station, is easily accessible, while the nearby A316 provides excellent road links—towards the M3 and M25 in one direction, and into Richmond and Central London in the other.

3



1



1



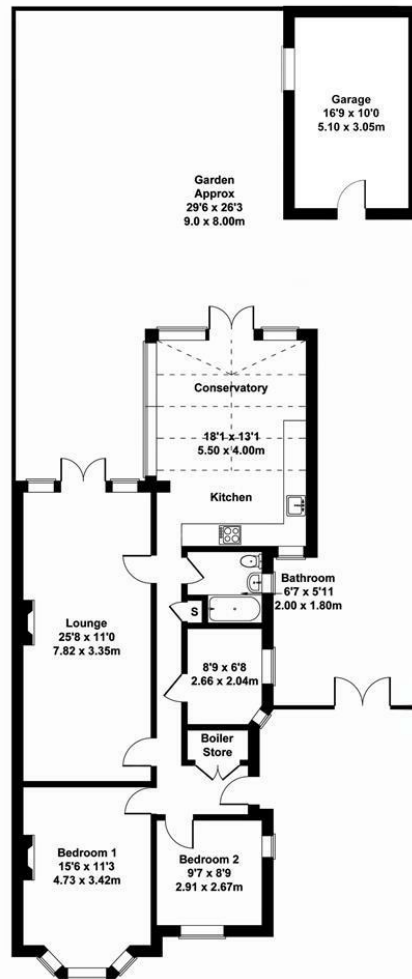






## Woodlawn Crescent, Whitton, TW2

Approximate Gross Internal Area  
1173 sq ft - 109 sq m



Not to Scale. Produced by The Plan Portal 2025  
For Illustrative Purposes Only.

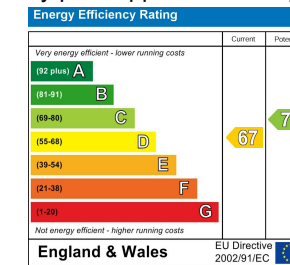
Shaw  
& Co

**LOCAL AUTHORITY**  
Richmond Upon Thames

**TENURE**  
Freehold

**COUNCIL TAX BAND**  
E

**VIEWINGS**  
By prior appointment only



Agents Note: Whilst every care has been taken to prepare these particulars, they are for guidance purposes only. All measurements are approximate and are for general guidance purposes only and whilst every care has been taken to ensure their accuracy, they should not be relied upon and potential buyers/tenants are advised to recheck the measurements

**Shaw  
& Co**  
ESTATE  
AGENTS

**OFFICE ADDRESS**  
Whitton  
Twickenham  
TW2 7LT

**OFFICE DETAILS**  
0208 894 3646  
whitton@shawandcoestates.com