

£530,000

Hospital Bridge Road

Twickenham, TW2 6DG

PROPERTY SUMMARY

Shaw & Co are delighted to present this charming semi-detached bungalow — an ideal opportunity for first-time buyers, those looking to downsize, or anyone seeking a home with extension potential (subject to planning permission). The property offers two well-proportioned bedrooms, a separate kitchen, a family bathroom, and a generous living area which leads into a large conservatory. Outside, you'll find a great sized garden and a driveway. Versatile and full of character, this home offers a fantastic blend of comfort and future potential.

2



1

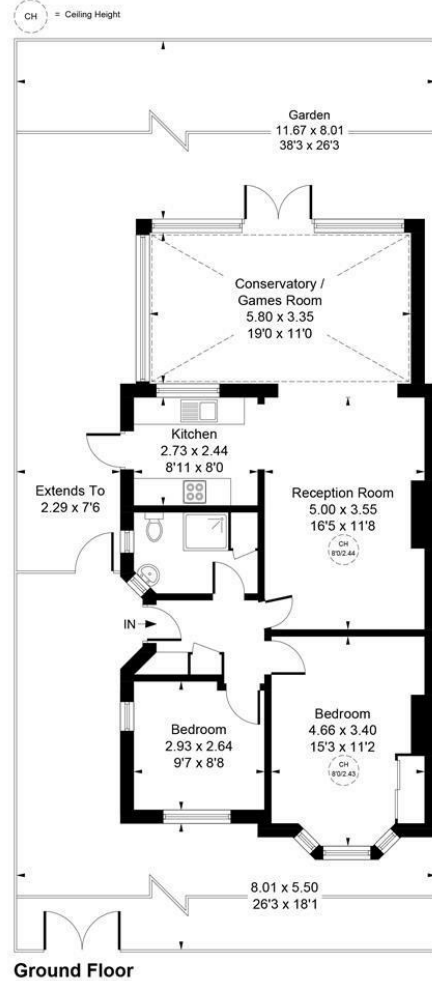


1





Approximate Gross Internal Area
81.79 sq m / 880 sq ft



Whilst every attempt has been made to ensure the accuracy of the floor plan contained here, measurements of doors, windows, rooms and any other items are approximate and no responsibility is taken for any error, omission, or mis-statement.
This plan is for illustrative purposes only and should be used as such by any prospective purchaser.
© Vizion Property Marketing Produced for Shaw & Co.



Shaw
& Co
ESTATE
AGENTS

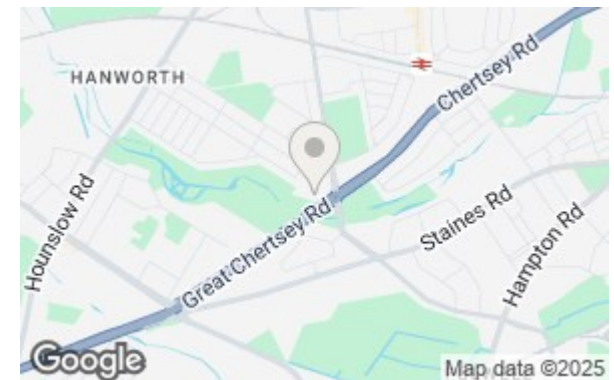
LOCAL AUTHORITY
Richmond

TENURE
Freehold

COUNCIL TAX BAND
D

VIEWINGS
By prior appointment only

Energy Efficiency Rating		
	Current	Potential
Very energy efficient - lower running costs		
(92 plus) A		
(81-91) B		
(69-80) C		
(55-68) D	64	75
(39-54) E		
(21-38) F		
(1-20) G		
Not energy efficient - higher running costs		
England & Wales	EU Directive 2002/91/EC	



Agents Note: Whilst every care has been taken to prepare these particulars, they are for guidance purposes only. All measurements are approximate and are for general guidance purposes only and whilst every care has been taken to ensure their accuracy, they should not be relied upon and potential buyers/tenants are advised to recheck the measurements

Shaw
& Co
ESTATE
AGENTS

OFFICE ADDRESS
Whitton
Twickenham
TW2 7LT

OFFICE DETAILS
0208 894 3646
whitton@shawandcoestates.com