



£799,950

Cheyne Avenue

Twickenham, TW2 6AN

PROPERTY SUMMARY

This larger than average family home is located in the ever-popular Woodlawn Development and offers a huge amount of space. To the ground floor the property comprises two reception rooms, one which is currently set up as a bedroom, a further open-plan reception/dining room which leads into the kitchen. The property has been extended to allow for a large rear conservatory/reception room overlooking the garden. There is also the added benefit of a utility room and a further bedroom/study/playroom with an en-suite shower room with WC and wash hand basin. To the first floor are five bedrooms with a further family bathroom.

Further benefits to the property include gas central heating, large rear garden with an outhouse for storage and off-street parking to the front of the house. The property could easily be extended into the loft STLPP. The property is located close to Whitton High Street, Whitton Train Station and many other local amenities with many highly rated Richmond borough school

5



3

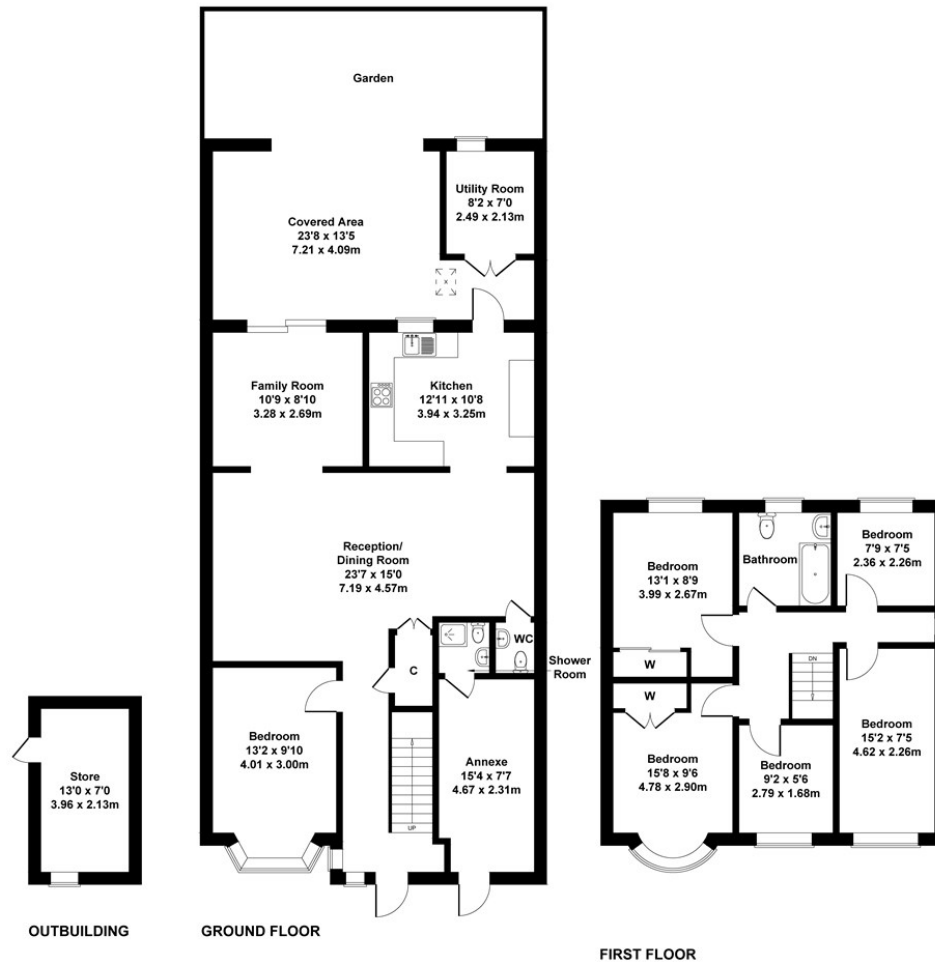


2





Cheyne Avenue
Approximate Gross Internal Area
1884 sq ft - 175 sq m



Not to Scale. Produced by The Plan Portal 2022
For Illustrative Purposes Only.

LOCAL AUTHORITY

Richmond upon Thames London Borough Council

TENURE

Freehold

COUNCIL TAX BAND

E

VIEWINGS

By prior appointment only

| Energy Efficiency Rating | | Current | Potential |
|---|--|-------------------------|-----------|
| Very energy efficient - lower running costs | | | |
| (92 plus) A | | | |
| (81-91) B | | | |
| (69-80) C | | | |
| (55-68) D | | 68 | 79 |
| (39-54) E | | | |
| (21-38) F | | | |
| (1-20) G | | | |
| Not energy efficient - higher running costs | | | |
| England & Wales | | EU Directive 2002/91/EC | |



Agents Note: Whilst every care has been taken to prepare these particulars, they are for guidance purposes only. All measurements are approximate and are for general guidance purposes only and whilst every care has been taken to ensure their accuracy, they should not be relied upon and potential buyers/tenants are advised to recheck the measurements

Shaw & Co
ESTATE AGENTS

OFFICE ADDRESS

Whitton
Twickenham
TW2 7LT

OFFICE DETAILS

0208 894 3646
whitton@shawandcoestates.com