

DRY CLEANERS *Duvals* 01895 235895  
Specialists in wedding dresses

Alterations & Repairs • Curtains & Household • Shirt Service

20% OFF  
ON  
TUESDAY  
FOR  
SENIOR  
CITIZENS

*Duvals*  
QUALITY ALTERATIONS & REPAIRS  
DUVETS • WEDDING DRESSES  
BANK QTS • DESIGNER SUITS  
C. ITANS • LEATHER & SUDE  
CUSHIONS • UNIFORMS  
BEDDING • HAND FINISHED  
SHEETS • SHIRT SERVICE  
Co-Operative Accounts Welcomed

*ASHTON & CO*  
Chartered Certified Accountants  
www.ashtonandcompany.co.uk • info@ashtonandcompany.co.uk • tel: 020 3583 2930

*ASHTON & CO*  
Tel: 020 3583 2930  
2 Grosvenor Park, Uxbridge Road  
Uxbridge, Middlesex, UB8 3LD

ACCOUNTS  
Business & financial planning  
Bookkeeping  
Management accounts  
Business start-ups  
Company formations - UK and international  
Payroll & benefits in kind  
Construction industry scheme - CIS  
Please enquire for additional services

VAT  
Tax rebates  
Taxation  
Tax investigations  
Management costs  
Information technology  
Company secretarial  
Debt consultancy  
Tax compliance

£30,000  
Uxbridge Road  
Hillingdon, UB10 0LG



## PROPERTY SUMMARY

A well established dry cleaner business for sale. Located on a busy parade with in a good residential area. The current vendor has occupied the premises for 20 + years and has a good established customer base, and is now looking to retire.

The premises is currently available on lease, which expires in 2029 (5 years). New 10 - 15 year lease is available, subject to usual references.

The sale includes all futures and fittings. For more information please contact our sales team.

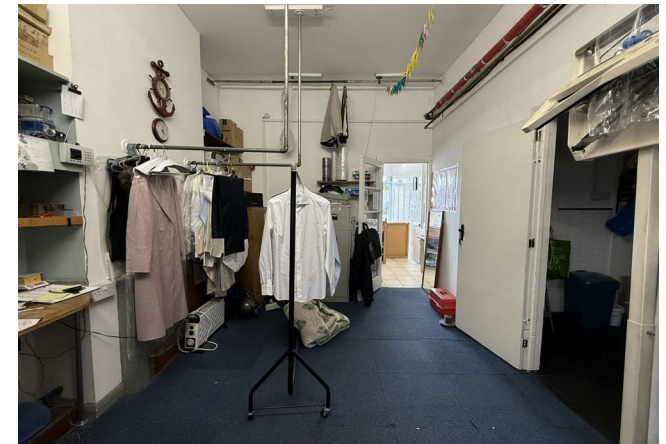
0



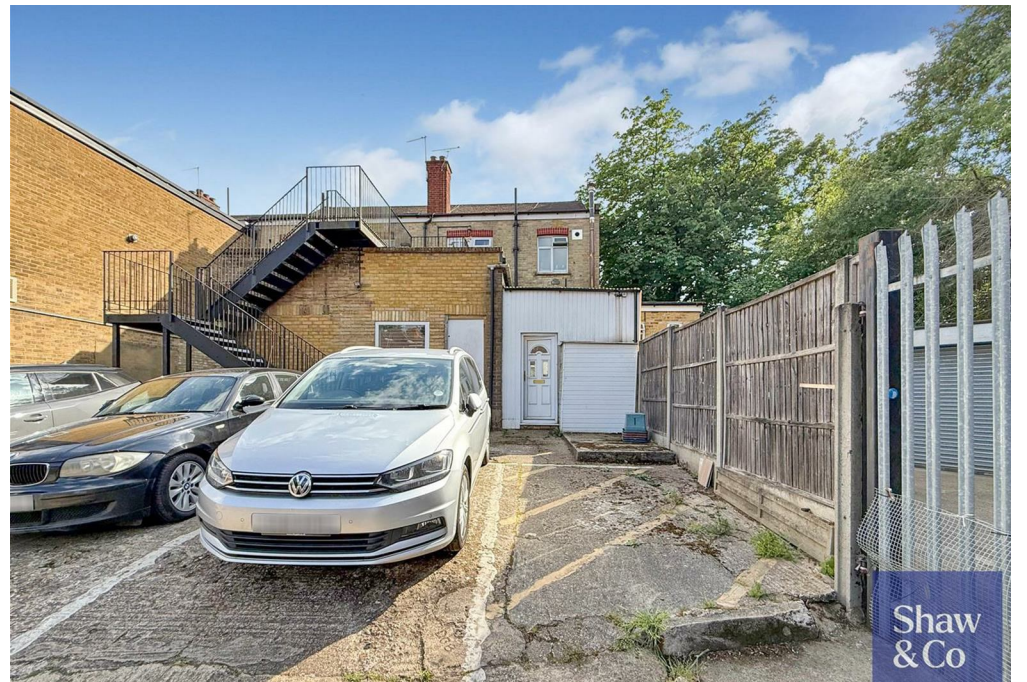
0



0










LOCAL AUTHORITY  
Hillingdon

TENURE  
Leasehold

COUNCIL TAX BAND

VIEWINGS  
By prior appointment only

Energy Efficiency Rating		
	Current	Potential
Very energy efficient - lower running costs		
(92 plus) A		
(81-91) B		
(69-80) C		
(55-68) D		
(39-54) E		
(21-38) F		
(1-20) G		
Not energy efficient - higher running costs		
England & Wales	EU Directive 2002/91/EC	



Agents Note: Whilst every care has been taken to prepare these particulars, they are for guidance purposes only. All measurements are approximate and are for general guidance purposes only and whilst every care has been taken to ensure their accuracy, they should not be relied upon and potential buyers/tenants are advised to recheck the measurements

Shaw  
& Co  
ESTATE  
AGENTS

OFFICE ADDRESS  
Whitton  
Twickenham  
TW2 7LT

OFFICE DETAILS  
0208 894 3646  
whitton@shawandcoestates.com