

**£750,000**

**North Drive**

Hounslow, TW3 1PT





## PROPERTY SUMMARY

A great family home, extending to just over 2,200 sqft of living space, situated in a popular residential area, boarding both Hounslow and Isleworth areas.

The ground floor accommodation comprises of an expansive open plan living/dining room area, with a fully fitting kitchen and separate utility room, office, guest cloakroom and front reception room currently being used as a gym. There is also a fifth bedroom with en-suite shower room located off the entrance hall. The first floor offers a master bedroom with fitted wardrobes and en-suite shower room, a further two bedrooms with en-suite shower room, family bathroom, and a fourth bedroom again with built in wardrobes and en-suite shower room located on the second floor.

The property is situated in a sought after residential area moments from Hounslow High Street and Hounslow East tube station (Piccadilly line). Local parks, schools and Isleworth train station are also within close walking distance.

5



5



2

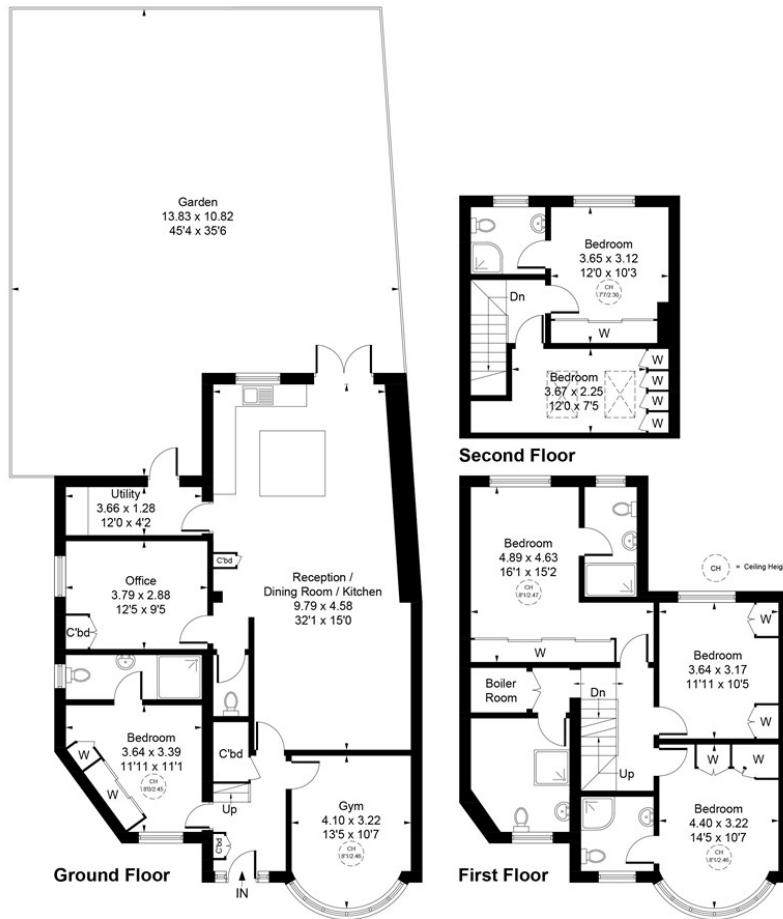








Approximate Gross Internal Area  
209.30 sq m / 2253 sq ft



Whilst every attempt has been made to ensure the accuracy of the floor plan contained here, measurements of doors, windows, rooms and any other items are approximate and no responsibility is taken for any error, omission, or mis-statement.  
This plan is for illustrative purposes only and should be used as such by any prospective purchaser.  
© Vizion Property Marketing Produced for Shaw & Co.

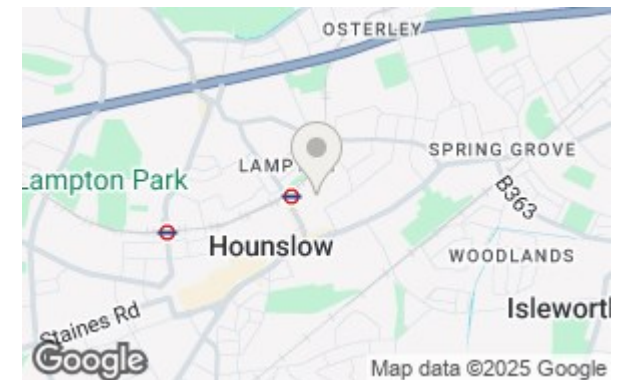
**LOCAL AUTHORITY**  
Hounslow London Borough Council

**TENURE**  
Freehold

**COUNCIL TAX BAND**  
D

**VIEWINGS**  
By prior appointment only

Energy Efficiency Rating		
	Current	Potential
Very energy efficient - lower running costs		
(92 plus) <b>A</b>		
(81-91) <b>B</b>		
(69-80) <b>C</b>		
(55-68) <b>D</b>		
(39-54) <b>E</b>		
(21-38) <b>F</b>		
(1-20) <b>G</b>		
Not energy efficient - higher running costs		
England & Wales		
EU Directive 2002/91/EC		



Agents Note: Whilst every care has been taken to prepare these particulars, they are for guidance purposes only. All measurements are approximate and are for general guidance purposes only and whilst every care has been taken to ensure their accuracy, they should not be relied upon and potential buyers/tenants are advised to recheck the measurements

**Shaw  
& Co**  
ESTATE  
AGENTS

**OFFICE ADDRESS**  
Whitton  
Twickenham  
TW2 7LT

**OFFICE DETAILS**  
0208 894 3646  
whitton@shawandcoestates.com