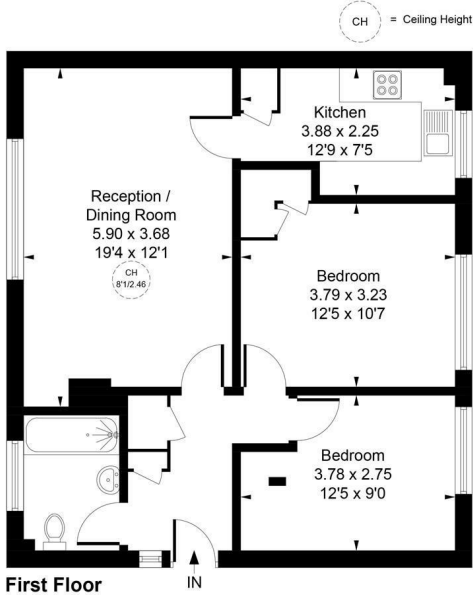


£382,000
Constance Road

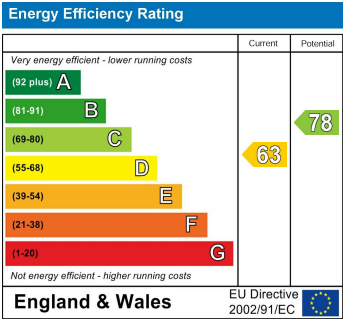
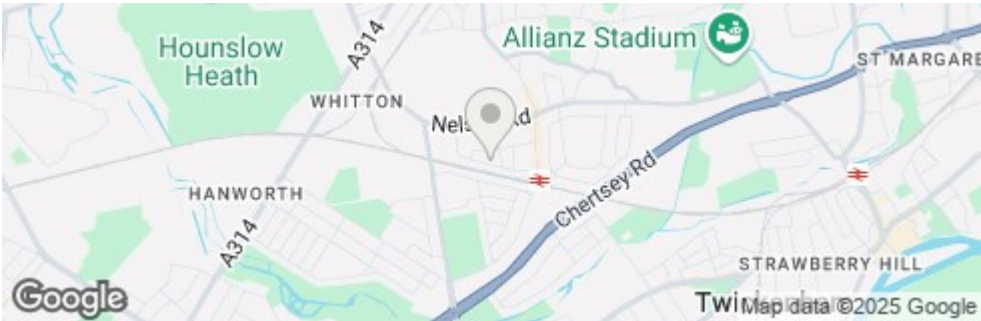
Twickenham, TW2 7JQ



Approximate Gross Internal Area
65.57 sq m / 706 sq ft



Whilst every attempt has been made to ensure the accuracy of the floor plan contained here, measurements of doors, windows, rooms and any other items are approximate and no responsibility is taken for any error, omission, or mis-statement. This plan is for illustrative purposes only and should be used as such by any prospective purchase.
© Vizion Property Marketing Produced for Shaw & Co.



- Two Double Bedroom First-Floor Apartment
- Share of Freehold - 999 years
- Large Communal Garden
- Close to Excellent Local Schools
- Nearby Parks & Green Spaces Including Crane Park & Murray Park
- Spacious Living Room
- No Onward Chain
- Walking Distance to Whitton High Street & Station
- Fast Train Services to London Waterloo in Under 30 Minutes
- Richmond Upon Thames

Agents Note: These particulars are for guidance only. All measurements area approximate and should be rechecked by buyers / tenants. While care has been taken to ensure accuracy, they should be solely relied upon.

Shaw
& Co
ESTATE
AGENTS

OFFICE ADDRESS
Whitton
Twickenham
TW2 7LT

OFFICE DETAILS
0208 894 3646
whitton@shawandcoestates.com