



OFFERS OVER

£235,000

Bennett Close

Hounslow, TW4 5AE

PROPERTY SUMMARY

This beautifully refurbished one bedroom top-floor flat is ideally located just a short distance from local amenities and excellent public transport links, making it a fantastic opportunity for first-time buyers or investors.

The property boasts light wood-effect laminate flooring throughout, built-in storage cupboards, and a loft hatch with a pull-down ladder and lighting, providing excellent additional storage space.

The bright and airy lounge/diner is bathed in natural light, thanks to double-glazed sliding doors leading to the balcony and a side-aspect frosted window. The open-plan layout creates a natural divide between living and dining areas, while a sliding door elegantly separates the sleek, modern kitchen from the reception/dining room. Thoughtfully designed, the kitchen features stylish, contemporary fittings.

The spacious and light-filled bedroom includes a fitted wardrobe for added convenience. The fully renovated bathroom, finished to the highest standards, boasts underfloor heating, a wall-mounted heated towel rail, an extractor fan, a wall-mounted mirror, and stylish tiled flooring.

Additional highlights of this exceptional home include a generously sized L-shaped balcony, an allocated parking space, and, best of all, the property is completely chain-free.

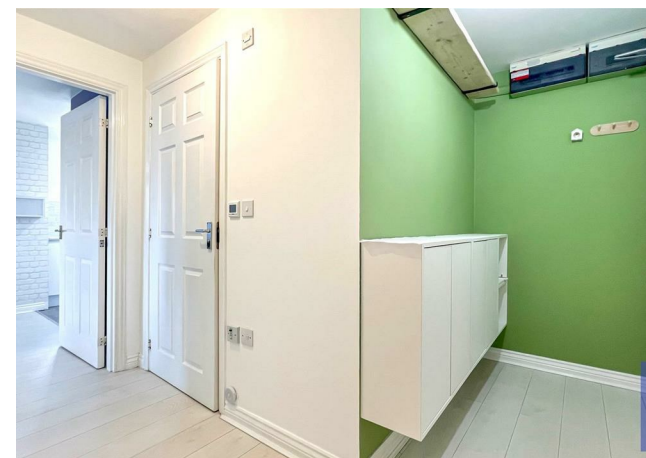
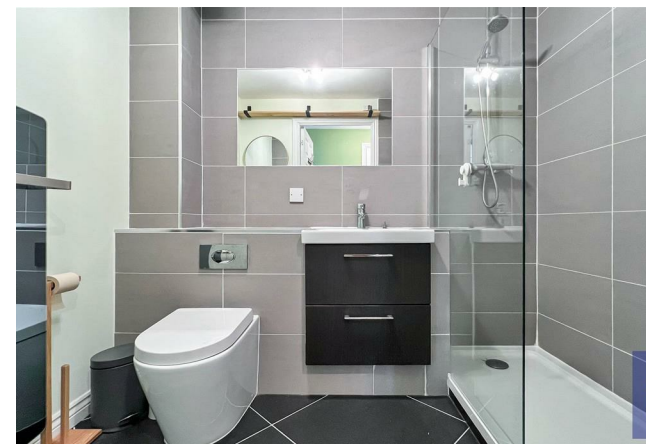
1



1



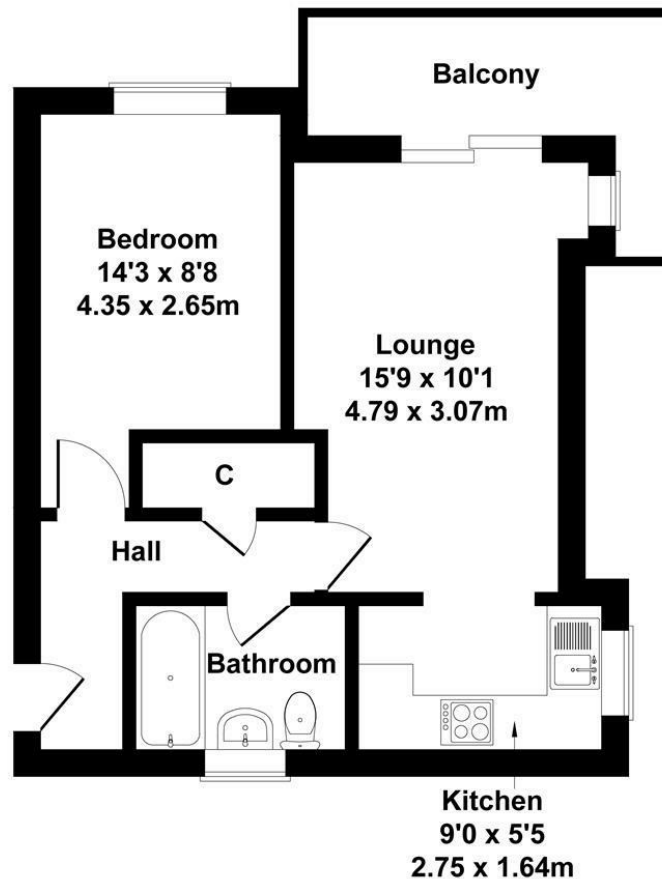
1





Bennett Close, Hounslow, TW4

Approximate Gross Internal Area
431 sq ft - 40 sq m



Not to Scale. Produced by The Plan Portal 2025
For Illustrative Purposes Only.

Shaw
& Co

LOCAL AUTHORITY
Hounslow

TENURE
Leasehold

COUNCIL TAX BAND
C

VIEWINGS
By prior appointment only

Energy Efficiency Rating		
	Current	Potential
Very energy efficient - lower running costs		
(92 plus) A		
(81-91) B		
(69-80) C		
(55-68) D		
(39-54) E		
(21-38) F		
(1-20) G		
Not energy efficient - higher running costs		
England & Wales	EU Directive 2002/91/EC	



Agents Note: Whilst every care has been taken to prepare these particulars, they are for guidance purposes only. All measurements are approximate and are for general guidance purposes only and whilst every care has been taken to ensure their accuracy, they should not be relied upon and potential buyers/tenants are advised to recheck the measurements

Shaw
& Co
ESTATE
AGENTS

OFFICE ADDRESS
Whitton
Twickenham
TW2 7LT

OFFICE DETAILS
0208 894 3646
whitton@shawandcoestates.com