

£799,950

Chester Avenue

Twickenham, TW2 6AG

PROPERTY SUMMARY

This stunning five-bedroom semi-detached home, presented in excellent condition throughout, is located in the highly sought-after Woodlawn Estate in Whitton, Twickenham.

Upon entering, you are welcomed by a spacious entrance hall leading to a bright and inviting reception room, offering plenty of space for relaxation and entertaining. The property also features a generous family room with an additional reception area, providing ample versatility for modern living.

To the rear, a beautifully extended, fully fitted kitchen with integrated appliances creates the perfect space for cooking and dining, enhanced by skylights that flood the room with natural light. Patio doors open onto the well-maintained rear garden, seamlessly blending indoor and outdoor living. A highly functional utility room is conveniently accessible from the kitchen.

The ground floor also benefits from a versatile fifth bedroom and a modern WC with a wash hand basin.

Upstairs, there are four further bedrooms, including a principal bedroom with an en-suite, along with a stylish family bathroom.

5



2



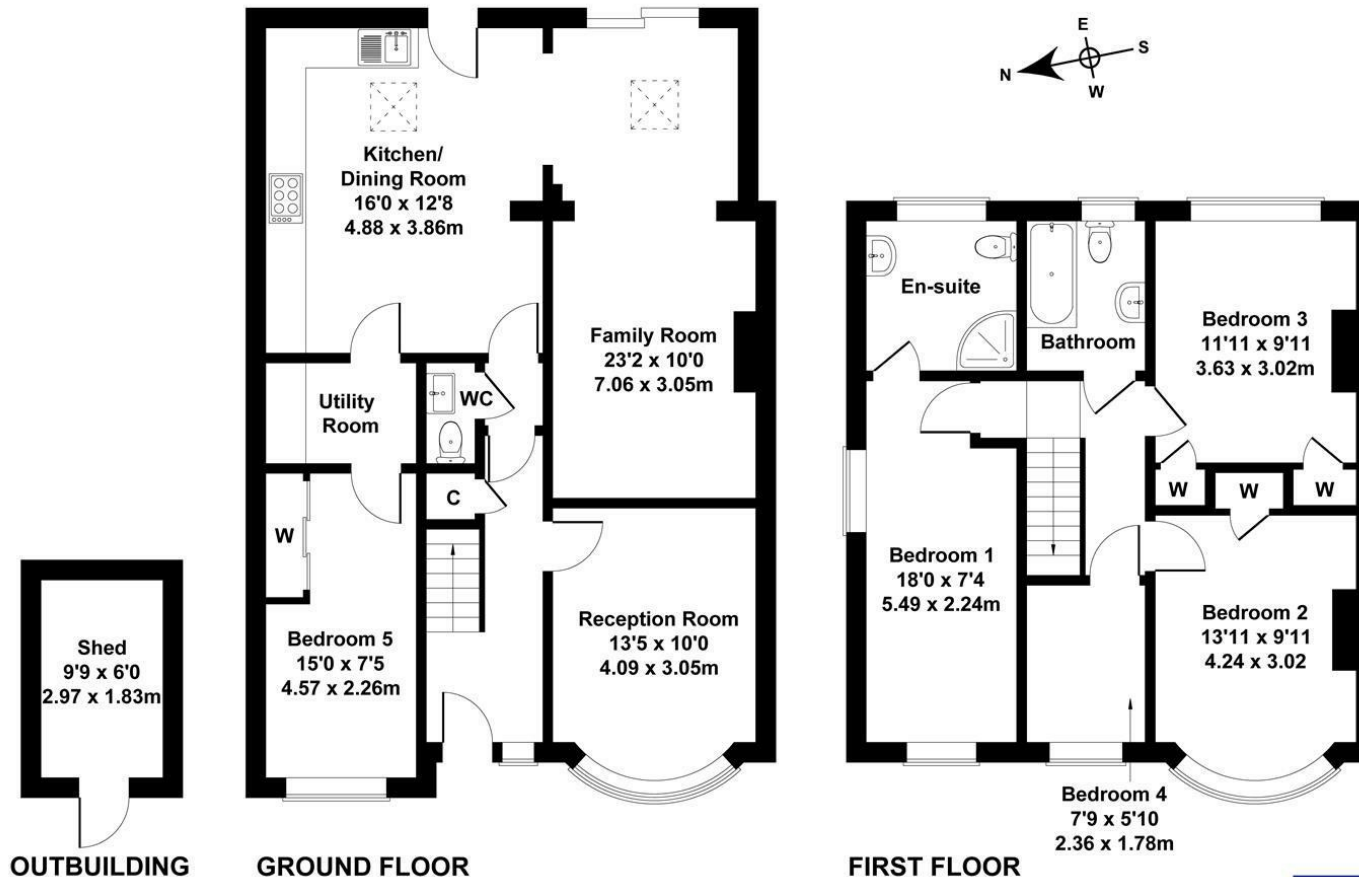
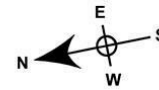
2





Chester Avenue, Whitton, Twickenham, TW2

Approximate Gross Internal Area
1550 sq ft - 144 sq m



Not to Scale. Produced by The Plan Portal 2025
For Illustrative Purposes Only.

LOCAL AUTHORITY
Richmond Upon Thames

TENURE
Freehold

COUNCIL TAX BAND
E

VIEWINGS
By prior appointment only

Energy Efficiency Rating		
	Current	Potential
Very energy efficient - lower running costs		
(92 plus) A		
(81-91) B		
(69-80) C		
(55-68) D		
(39-54) E		
(21-38) F		
(1-20) G		
Not energy efficient - higher running costs		
England & Wales	EU Directive 2002/91/EC	



Agents Note: Whilst every care has been taken to prepare these particulars, they are for guidance purposes only. All measurements are approximate and are for general guidance purposes only and whilst every care has been taken to ensure their accuracy, they should not be relied upon and potential buyers/tenants are advised to recheck the measurements

**Shaw
& Co**
ESTATE
AGENTS

OFFICE ADDRESS
Whitton
Twickenham
TW2 7LT

OFFICE DETAILS
0208 894 3646
whitton@shawandcoestates.com

Shaw
& Co