

**£525,000**

**Rosedene Mews**

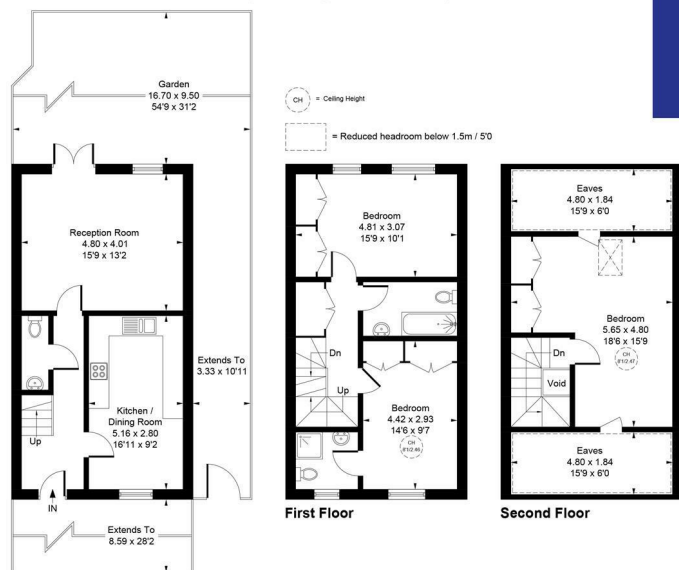
Uxbridge, UB8 2FQ



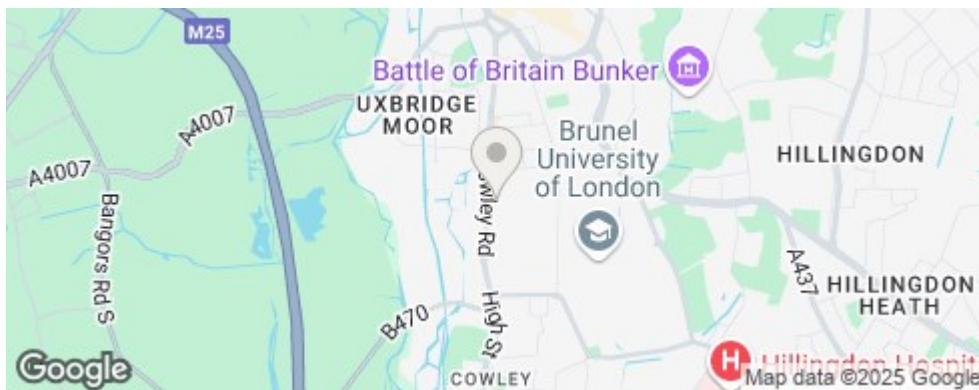


Approximate Gross Internal Area = 116.71 sq m / 1256 sq ft  
(Excluding Eaves & Void)

Shaw  
& Co  
ESTATE  
AGENTS



Whilst every attempt has been made to ensure the accuracy of the floor plan contained here, measurements of doors, windows, rooms and any other items are approximate and no responsibility is taken for any error, omission, or mis-statement. This plan is for illustrative purposes only and should be used as such by any prospective purchase.  
© Vizion Property Marketing Produced for Shaw & Co.



Energy Efficiency Rating		
	Current	Potential
Very energy efficient - lower running costs		
(92 plus) A		
(81-91) B		
(69-80) C		
(55-68) D		
(39-54) E		
(21-38) F		
(1-20) G		
Not energy efficient - higher running costs		
England & Wales	78	88
EU Directive 2002/91/EC		



Agents Note: Whilst every care has been taken to prepare these particulars, they are for guidance purposes only. All measurements are approximate and are for general guidance purposes only and whilst every care has been taken to ensure their accuracy, they should not be relied upon and potential buyers/tenants are advised to recheck the measurements

Shaw  
& Co  
ESTATE  
AGENTS

OFFICE ADDRESS  
Whitton  
Twickenham  
TW2 7LT

OFFICE DETAILS  
0208 894 3646  
whitton@shawandcoestates.com