

ASKING PRICE

**£1,800,000**

**Staines Road**

Hounslow, TW4 5AR





## PROPERTY SUMMARY

Freehold parcel of land, benefitting with planning permission approved to construct a 4 storey building comprising of a large ground floor commercial, 5 x 2 bedroom flats & 3 x 3 bedroom split level flats, all flats are generously sized and come with balconies. The site also has all mains connections, which adds a further cost effective advantage.

Located on a prominent corner plot in Hounslow, based on Staines Road with bus links to Hounslow High Street and Heathrow Airport. Within walking distance to local amenities, Hounslow West Underground Station & Hounslow Heath Park. PL/2022/3767. scl-land

Site Area - 7231 sqft

GIA - 7380 sqft

CIL - £122,536

null 

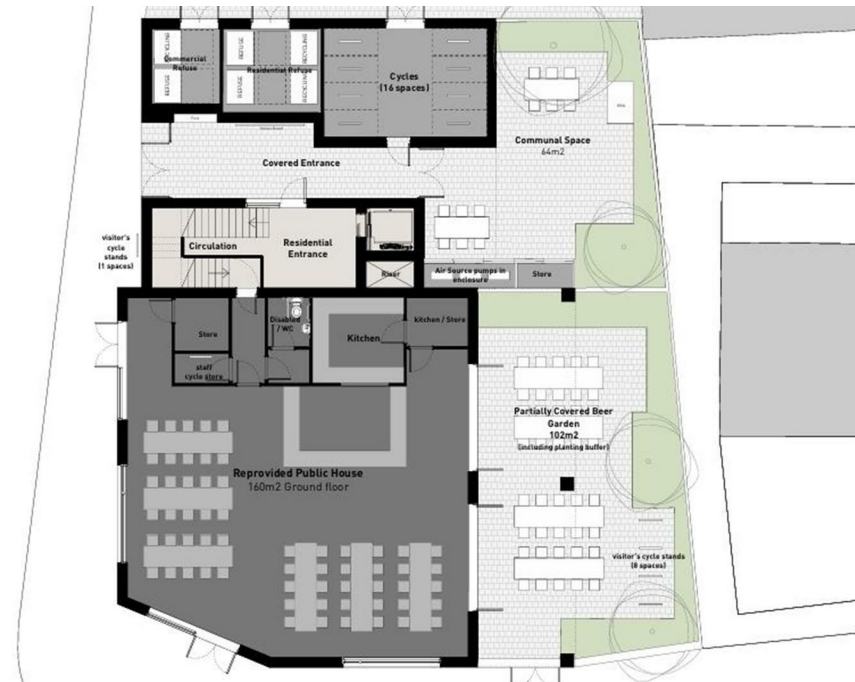
null 

null 

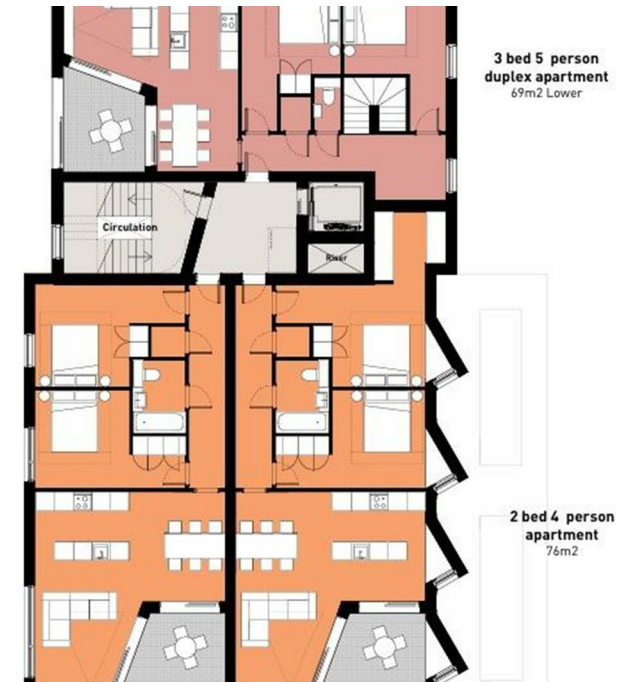








2 bed 4 person  
apartment  
72m<sup>2</sup>



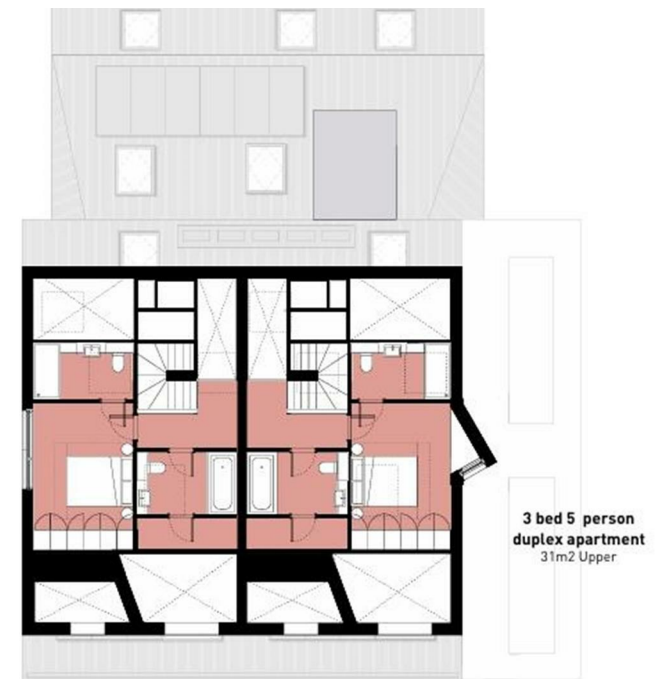
2 bed 4 person  
apartment  
76m<sup>2</sup>



2 bed 3 person  
apartment  
68m<sup>2</sup>

2 bed 4 person  
apartment  
78m<sup>2</sup>

3 bed 5 person  
duplex apartment  
31m<sup>2</sup> Upper









### LOCAL AUTHORITY

Hounslow

### TENURE

Freehold

### COUNCIL TAX BAND

New Build

### VIEWINGS

By prior appointment only

Energy Efficiency Rating		
	Current	Potential
Very energy efficient - lower running costs		
(92 plus) <b>A</b>		
(81-91) <b>B</b>		
(69-80) <b>C</b>		
(55-68) <b>D</b>		
(39-54) <b>E</b>		
(21-38) <b>F</b>		
(1-20) <b>G</b>		
Not energy efficient - higher running costs		
England & Wales		EU Directive 2002/91/EC



Agents Note: Whilst every care has been taken to prepare these particulars, they are for guidance purposes only. All measurements are approximate and are for general guidance purposes only and whilst every care has been taken to ensure their accuracy, they should not be relied upon and potential buyers/tenants are advised to recheck the measurements

**Shaw  
& Co**  
ESTATE  
AGENTS

### OFFICE ADDRESS

Whitton  
Twickenham  
TW2 7LT

### OFFICE DETAILS

0208 894 3646  
whitton@shawandcoestates.com