



**Shaw
& Co**
ESTATE
AGENTS

£550,000

White Heart Avenue

Uxbridge, UB8 3EP

PROPERTY SUMMARY

Nestled in the charming area of White Heart Avenue, Uxbridge, this delightful detached bungalow offers a perfect blend of comfort and convenience. Spanning an impressive 1,066 square feet, the property boasts four well-proportioned bedrooms.

Upon entering, you are greeted by a spacious reception room that serves as the heart of the home, providing a warm and inviting atmosphere for both relaxation and entertaining. The layout is thoughtfully designed, ensuring a seamless flow throughout the living spaces.

The bungalow features two modern bathrooms, which add to the practicality of the home, catering to the needs of a busy household.

Situated in a desirable location, this property benefits from easy access to local amenities, schools, and transport links, making it an excellent choice for those who value both tranquillity and accessibility.

This bungalow presents a wonderful opportunity for anyone looking to settle in a spacious and well-appointed home in Uxbridge. With its generous living space and prime location, it is sure to attract interest from a variety of buyers. Do not miss the chance to make this charming property your own.

4



2

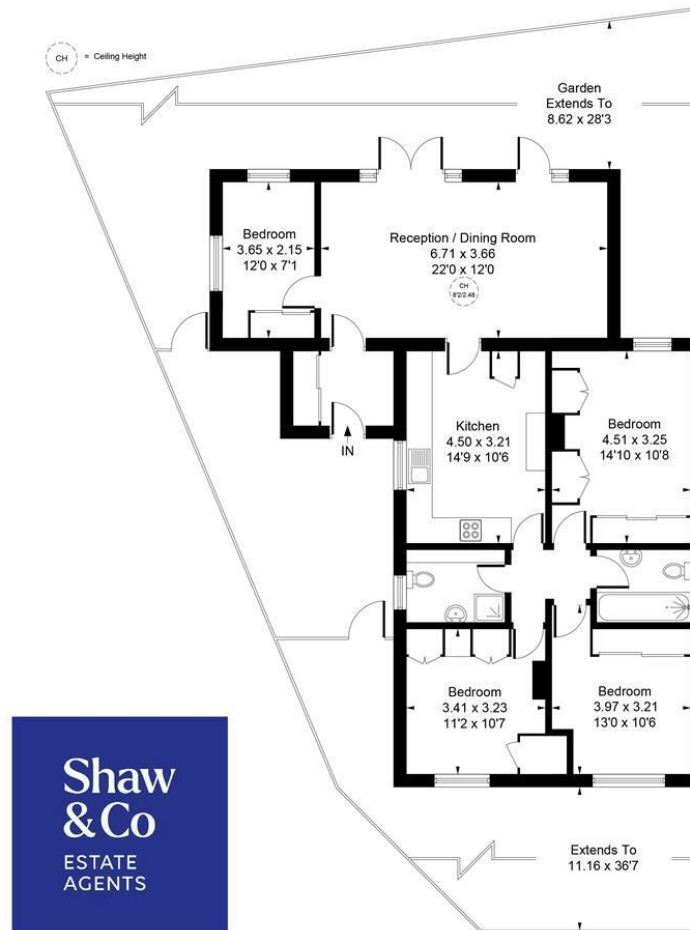


1





Approximate Gross Internal Area
106.18 sq m / 1143 sq ft



Ground Floor

Whilst every attempt has been made to ensure the accuracy of the floor plan contained here, measurements of doors, windows, rooms and any other items are approximate and no responsibility is taken for any error, omission, or mis-statement.
This plan is for illustrative purposes only and should be used as such by any prospective purchaser.
© Vizion Property Marketing Produced for Shaw & Co.

LOCAL AUTHORITY
Hillingdon

TENURE
Freehold

COUNCIL TAX BAND
E

VIEWINGS
By prior appointment only

Energy Efficiency Rating		
	Current	Potential
Very energy efficient - lower running costs		
(92 plus) A		
(81-91) B		85
(69-80) C	69	
(55-68) D		
(39-54) E		
(21-38) F		
(1-20) G		
Not energy efficient - higher running costs		
England & Wales		EU Directive 2002/91/EC



Agents Note: Whilst every care has been taken to prepare these particulars, they are for guidance purposes only. All measurements are approximate and are for general guidance purposes only and whilst every care has been taken to ensure their accuracy, they should not be relied upon and potential buyers/tenants are advised to recheck the measurements

**Shaw
& Co**
ESTATE
AGENTS

OFFICE ADDRESS
Whitton
Twickenham
TW2 7LT

OFFICE DETAILS
0208 894 3646
whitton@shawandcoestates.com