

Shaw & Co
ESTATE AGENTS
For Sale
0208 894 3646
www.shawandcoestates.com

£600,000
Bridge Road
Hounslow, TW3 1SG

PROPERTY SUMMARY

Welcome to this stunning new build detached family home located on the borders of Hounslow and Isleworth. This modern and stylish property boasts three bedrooms, spacious lounge and a fully integrated kitchen. This property is perfect for a growing family or those in need of extra space.

As you step inside, you'll be greeted by a spacious reception room, leading through to an open plan kitchen/ diner, ideal for entertaining guests. There is also an additional ground floor WC. To the first floor you'll find three bedrooms and a modern fitted bathroom suite. This property's contemporary design is sure to impress, offering a sleek and sophisticated living space for you to make your own.

Built in 2024, this house is brand new, meaning you can enjoy all the benefits of modern construction and design, and benefitting from a 10-year new build warranty. The location on Bridge Road provides easy access to local amenities, schools, and transport links.

3



2



1

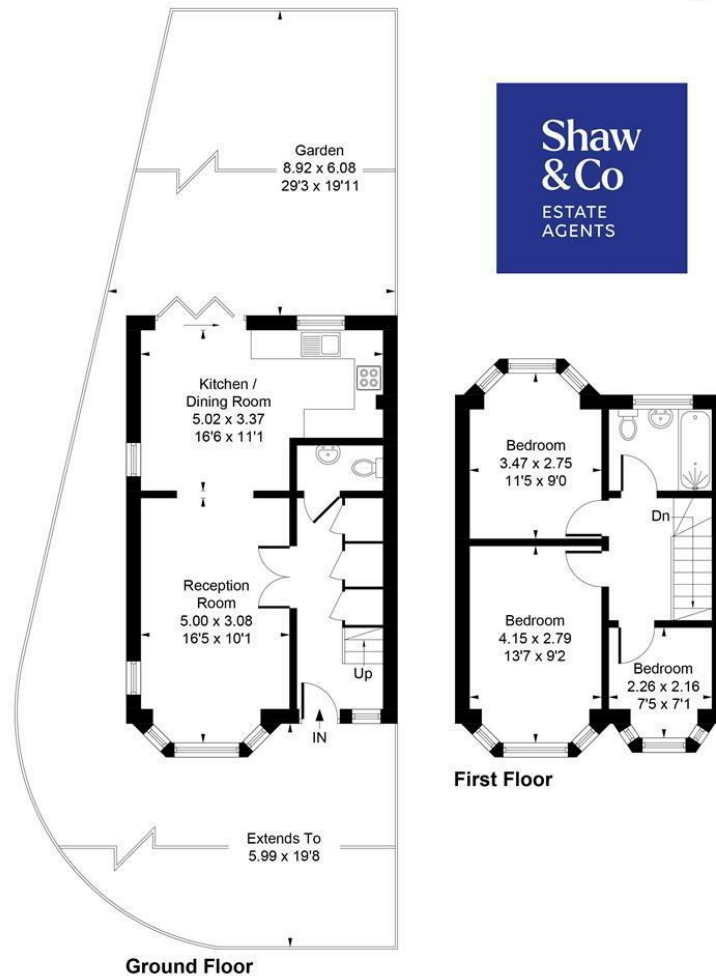




Approximate Gross Internal Area
76.91 sq m / 828 sq ft



**Shaw
& Co**
ESTATE
AGENTS



Whilst every attempt has been made to ensure the accuracy of the floor plan contained here, measurements of doors, windows, rooms and any other items are approximate and no responsibility is taken for any error, omission, or mis-statement.
This plan is for illustrative purposes only and should be used as such by any prospective purchaser.
© Vizion Property Marketing Produced for Shaw & Co.

LOCAL AUTHORITY

Hounslow

TENURE

Freehold

COUNCIL TAX BAND

VIEWINGS

By prior appointment only

Energy Efficiency Rating		
	Current	Potential
Very energy efficient - lower running costs		
(92 plus) A		91
(81-91) B	82	
(69-80) C		
(55-68) D		
(39-54) E		
(21-38) F		
(1-20) G		
Not energy efficient - higher running costs		
England & Wales	EU Directive 2002/91/EC	



Agents Note: Whilst every care has been taken to prepare these particulars, they are for guidance purposes only. All measurements are approximate and are for general guidance purposes only and whilst every care has been taken to ensure their accuracy, they should not be relied upon and potential buyers/tenants are advised to recheck the measurements

**Shaw
& Co**
ESTATE
AGENTS

OFFICE ADDRESS

Whitton
Twickenham
TW2 7LT

OFFICE DETAILS

0208 894 3646
whitton@shawandcoestates.com