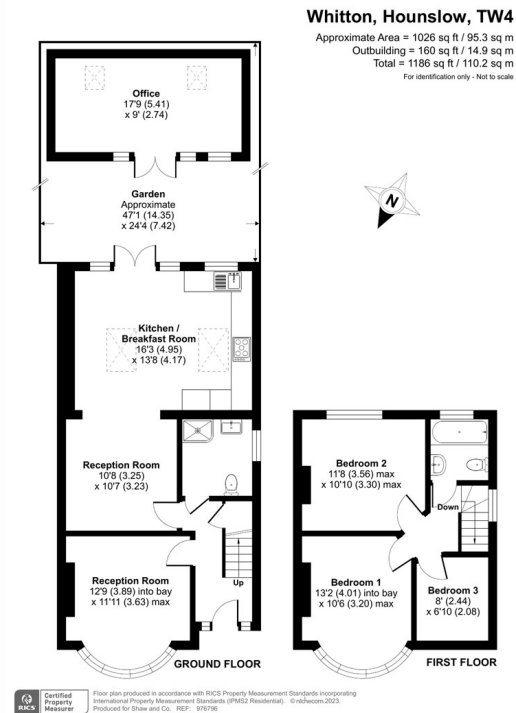


**£550,000**  
**Redfern Avenue**

Hounslow, TW4 5LY







Energy Efficiency Rating		
	Current	Potential
Very energy efficient - lower running costs		
(92 plus) A		
(81-91) B		
(69-80) C		
(55-68) D		
(39-54) E		
(21-38) F		
(1-20) G		
Not energy efficient - higher running costs		
England & Wales	EU Directive 2002/91/EC	

- Semi-Detached
- 2 Bathrooms
- Quiet Residential Road
- 3 Bedrooms
- Off-Street Parking
- Great Transport Links

Agents Note: These particulars are for guidance only. All measurements area approximate and should be rechecked by buyers / tenants. While care has been taken to ensure accuracy, they should be solely relied upon.

**Shaw  
& Co**  
ESTATE  
AGENTS

**OFFICE ADDRESS**  
 Whitton  
 Twickenham  
 TW2 7LT

**OFFICE DETAILS**  
 0208 894 3646  
 whitton@shawandcoestates.com