



£475,000

Lansbury Avenue

Feltham, TW14 0JR

PROPERTY SUMMARY

Welcome to Lansbury Avenue, Feltham - a charming 3-bedroom property situated in a prime location. This mid-terrace house provides easy access to Feltham Station and the bustling high street, making everyday errands and commuting a breeze.

This delightful house boasts a spacious through lounge reception room leading into an extended kitchen/diner, perfect for entertaining guests. To the first floor you'll find three cosy bedrooms with a family bathroom suite.

Further benefits include front off street parking, large well maintained rear garden with rear vehicle access to garage.

3



1

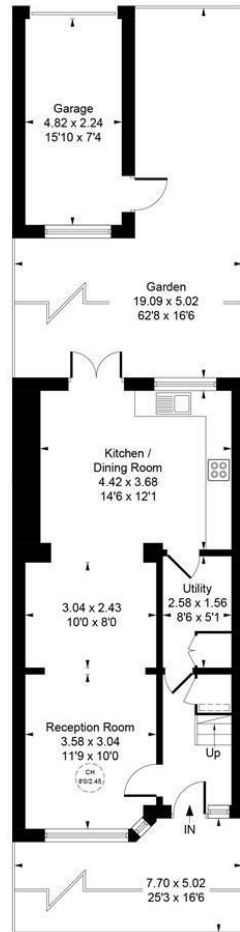


2





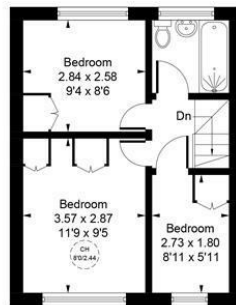
Approximate Gross Internal Area = 77.29 sq m / 832 sq ft
 Garage = 11.17 sq m / 120 sq ft
 Total = 88.46 sq m / 952 sq ft



Ground Floor



CH = Ceiling Height
 = Reduced headroom below 1.5m / 5'0"



First Floor

Whilst every attempt has been made to ensure the accuracy of the floor plan contained here, measurements of doors, windows, rooms and any other items are approximate and no responsibility is taken for any error, omission, or mis-statement. This plan is for illustrative purposes only and should be used as such by any prospective purchaser.
 © Vizion Property Marketing Produced for Shaw & Co.

LOCAL AUTHORITY

Hounslow

TENURE

Freehold

COUNCIL TAX BAND

D

VIEWINGS

By prior appointment only

Energy Efficiency Rating		Current	Potential
Very energy efficient - lower running costs			
(92 plus) A			88
(81-91) B			
(69-80) C		67	
(55-68) D			
(39-54) E			
(21-38) F			
(1-20) G			
Not energy efficient - higher running costs			
England & Wales		EU Directive 2002/91/EC	



Agents Note: Whilst every care has been taken to prepare these particulars, they are for guidance purposes only. All measurements are approximate and are for general guidance purposes only and whilst every care has been taken to ensure their accuracy, they should not be relied upon and potential buyers/tenants are advised to recheck the measurements

Shaw & Co
 ESTATE AGENTS

OFFICE ADDRESS

Whitton
 Twickenham
 TW2 7LT

OFFICE DETAILS

0208 894 3646
 whitton@shawandcoestates.com