

**Shaw  
& Co**  
ESTATE  
AGENTS

**£439,950**

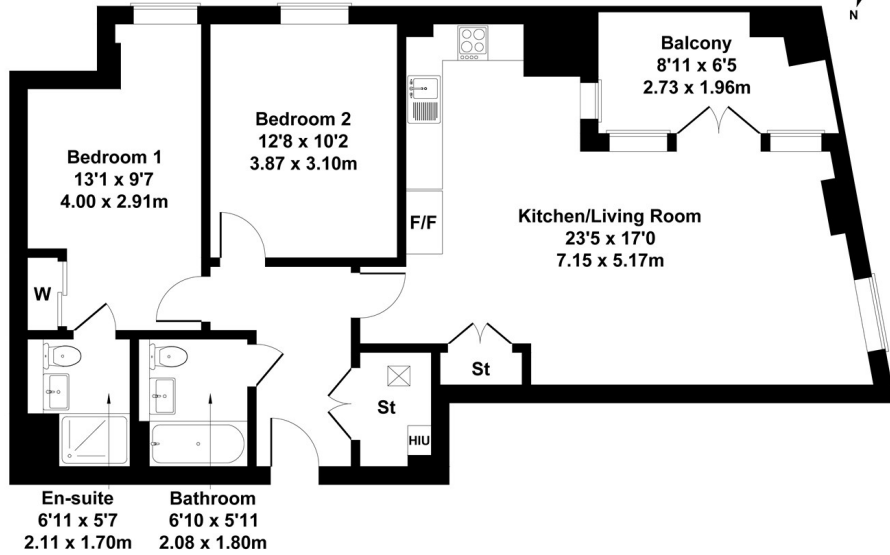
**London Road**

Isleworth, TW7 4FR

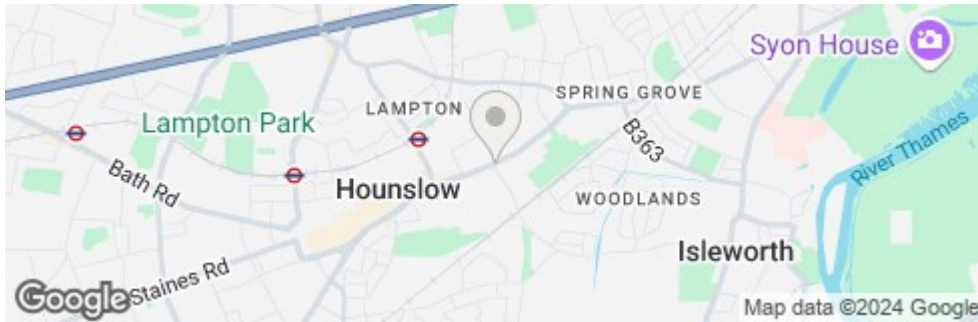
Shaw & Co

# Silchester Apartments, Isleworth, TW7

Approximate Gross Internal Area  
846 sq ft - 79 sq m



Not to Scale. Produced by The Plan Portal 2023  
For Illustrative Purposes Only.



Energy Efficiency Rating		Current	Potential
Very energy efficient - lower running costs			
(92 plus) A		86	86
(81-91) B			
(69-80) C			
(55-68) D			
(39-54) E			
(21-38) F			
(1-20) G			
Not energy efficient - higher running costs			
England & Wales		EU Directive 2002/91/EC	

- Two Double-Bedroom Apartment
- En-suite to Main Bedroom
- Spacious Living Room
- Excellent condition
- Private Balcony
- Allocated Parking
- Forth Floor
- Lift Service
- Leasehold: 116 Years

Agents Note: These particulars are for guidance only. All measurements are approximate and should be rechecked by buyers / tenants. While care has been taken to ensure accuracy, they should be solely relied upon.

**Shaw & Co**  
ESTATE AGENTS

OFFICE ADDRESS  
Whitton  
Twickenham  
TW2 7LT

OFFICE DETAILS  
0208 894 3646  
whitton@shawandcoestates.com