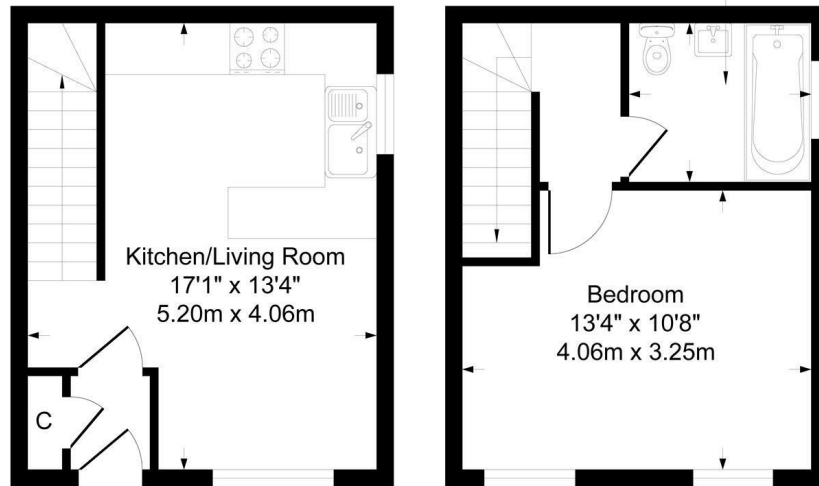




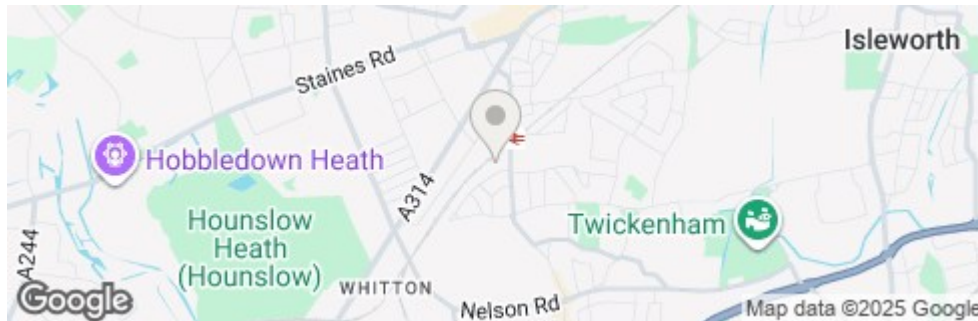
£310,000
Lanigan Drive
Hounslow, TW3 2EA

Approximate Gross Internal Area
454 sq ft - 42 sq m

Bathroom
6'11" x 6'1"
2.12m x 1.85m



Although every attempt has been made to ensure accuracy, all measurements are approximate.
This floorplan is for illustrative purposes only and not to scale.
Measured in accordance with RICS Standards.



Energy Efficiency Rating		
	Current	Potential
Very energy efficient - lower running costs		
(92 plus) A		
(81-91) B		
(69-80) C		
(55-68) D		
(39-54) E		
(21-38) F		
(1-20) G		
Not energy efficient - higher running costs		
England & Wales	71	87
EU Directive 2002/91/EC		

- 1-Bedroom House
- No Onward Chain
- Front Garden
- Great Location
- End of Terrace
- Allocated Parking
- Freehold
- Walking Distance to Hounslow Overground Station

Agents Note: These particulars are for guidance only. All measurements area approximate and should be rechecked by buyers / tenants. While care has been taken to ensure accuracy, they should be solely relied upon.

**Shaw
& Co**
ESTATE
AGENTS

OFFICE ADDRESS
Whitton
Twickenham
TW2 7LT

OFFICE DETAILS
0208 894 3646
whitton@shawandcoestates.com