

Shaw & Co
ESTATE AGENTS

SUNNINGDALE COURT

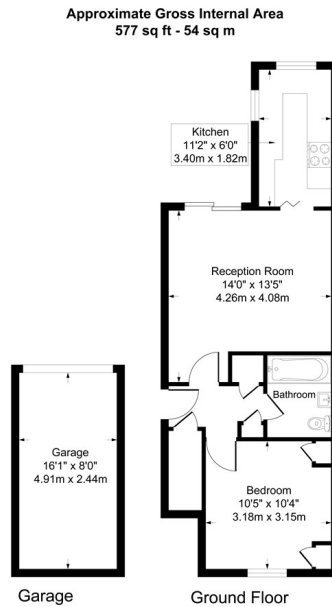
OFFERS IN EXCESS OF

£275,000

Whitton Dene

Hounslow, TW3 2JR

Shaw & Co
ESTATE AGENTS



Although every attempt has been made to ensure accuracy, all measurements are approximate. This floorplan is for illustrative purposes only and not to scale. Measured in accordance with RICS Standards.



Energy Efficiency Rating		Current	Potential
Very energy efficient - lower running costs			
(92 plus) A			
(81-91) B			
(69-80) C			
(55-68) D			
(39-54) E			
(21-38) F			
(1-20) G			
Not energy efficient - higher running costs			
England & Wales		EU Directive 2002/91/EC	

- 1 Bedroom Ground Floor Maisonette
- Long Lease - 170 years
- Garage
- Private Garden
- Immaculate Condition
- Parking
- Close to Local Amenities
- Ample Storage Space

Agents Note: These particulars are for guidance only. All measurements area approximate and should be rechecked by buyers / tenants. While care has been taken to ensure accuracy, they should be solely relied upon.

Shaw & Co

ESTATE AGENTS

OFFICE ADDRESS

Whitton
Twickenham
TW2 7LT

OFFICE DETAILS

0208 894 3646
whitton@shawandcoestates.com