

Shaw & Co
ESTATE AGENTS

£605,000

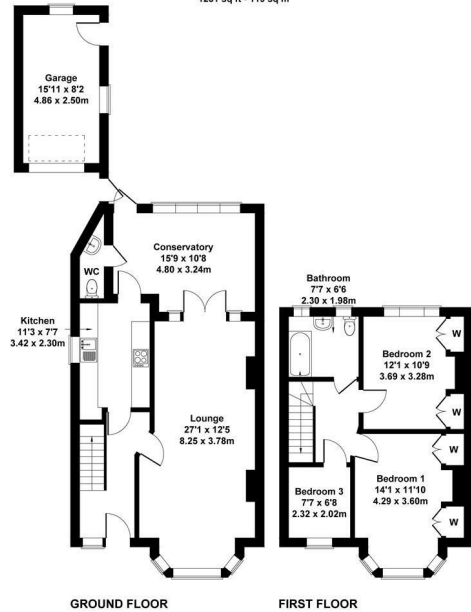
Shirley Drive

Hounslow, TW3 2HE

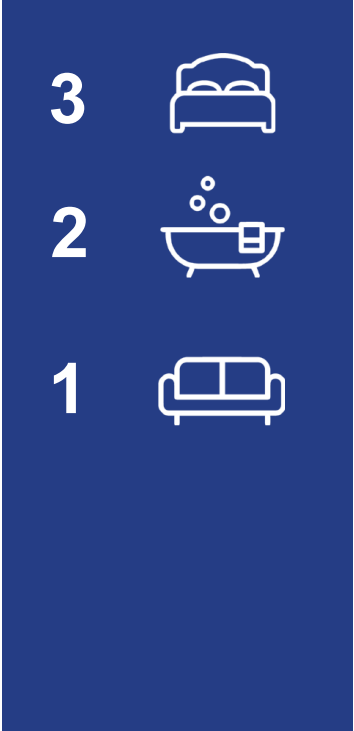
Shaw & Co

Shirley Drive, Hounslow

Approximate Gross Internal Area
1281 sq ft - 119 sq m



Not to Scale. Produced by The Plan Portal 2023
For Illustrative Purposes Only.



Energy Efficiency Rating		Current	Potential
Very energy efficient - lower running costs			
(92 plus)	A		
(81-91)	B		
(69-80)	C		
(55-68)	D		
(39-54)	E		
(21-38)	F		
(1-20)	G		
Not energy efficient - higher running costs			
England & Wales		EU Directive 2002/91/EC	

Agents Note: Whilst every care has been taken to prepare these particulars, they are for guidance purposes only. All measurements are approximate and are for general guidance purposes only and whilst every care has been taken to ensure their accuracy, they should not be relied upon and potential buyers/tenants are advised to recheck the measurements



Shaw & Co

ESTATE AGENTS

OFFICE ADDRESS

Whitton
Twickenham
TW2 7LT

OFFICE DETAILS

0208 894 3646
whitton@shawandcoestates.com