

Shaw & Co
ESTATE AGENTS

OFFERS OVER

£230,000

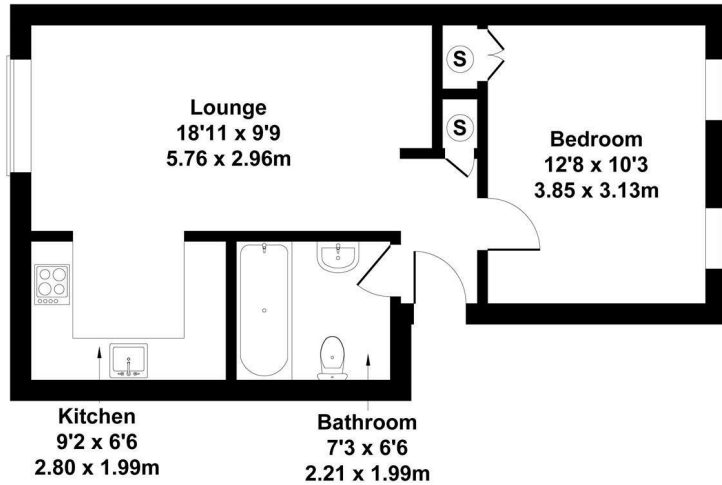
Vickers Way

Hounslow, TW4 5EE

Shaw & Co
ESTATE AGENTS

Sheridan Court, Vickers Way, Hounslow

Approximate Gross Internal Area
474 sq ft - 44 sq m



Not to Scale. Produced by The Plan Portal 2023
For Illustrative Purposes Only.



Energy Efficiency Rating		Current	Potential
Very energy efficient - lower running costs			
(92 plus) A			
(81-91) B			
(69-80) C			
(55-68) D			
(39-54) E			
(21-38) F			
(1-20) G			
Not energy efficient - higher running costs			
England & Wales		70	77
EU Directive 2002/91/EC			

Agents Note: Whilst every care has been taken to prepare these particulars, they are for guidance purposes only. All measurements are approximate and are for general guidance purposes only and whilst every care has been taken to ensure their accuracy, they should not be relied upon and potential buyers/tenants are advised to recheck the measurements

Shaw & Co
ESTATE AGENTS

OFFICE ADDRESS
Whitton
Twickenham
TW2 7LT

OFFICE DETAILS
0208 894 3646
whitton@shawandcoestates.com