



Broadmayne Mews , Cleavelands Drive, Pittville, Cheltenham, GL50

Guide Price £900,000

🛏 4 🍳 2 🚗 2



We are excited to present Broadmayne Mews, an exclusive new development of five luxurious detached houses situated in the prestigious Pittville area of Cheltenham. Developed by the esteemed Le Grand Developments, known for their dedication to crafting bespoke homes of exceptional quality, these properties offer the perfect blend of modern living and timeless elegance. Forming part of a private and tranquil enclave, this substantial and impressive newly constructed four-bedroom detached family home is one of only five exquisite properties on this sought-after address.

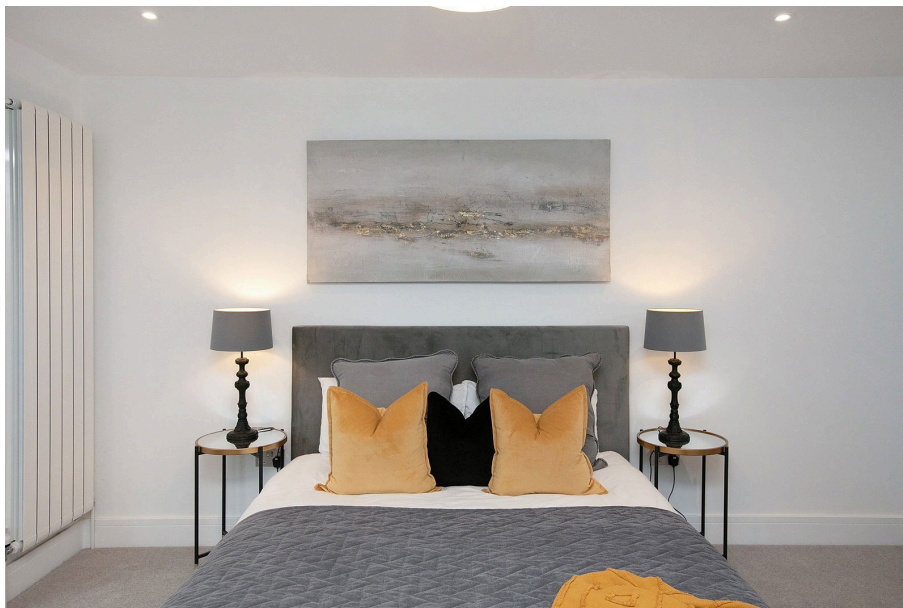
This elegantly designed home offers both formal and social spaces, creating an inviting and versatile layout. The spacious entrance hall leads to all ground floor living areas, including a practical utility room and cloakroom. The formal sitting room, featuring a large bay window, exudes light and space, making it an ideal retreat.

The rear of the house encompasses the open-plan kitchen/dining/family room, serving as the vibrant hub of the home. This area is brightened by a feature ceiling lantern and bi-fold doors that lead to the sun terrace and landscaped garden. The bespoke kitchen boasts integrated appliances, an expansive breakfast island, and luxurious quartz worktops.

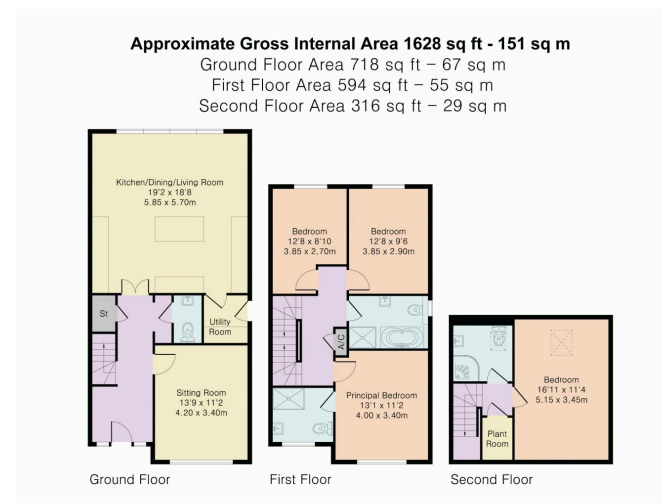
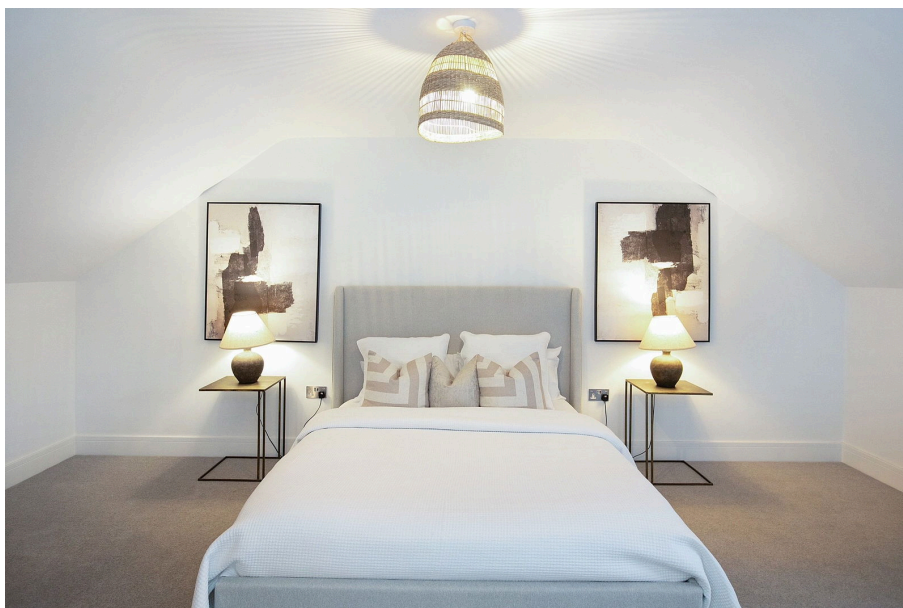
The first floor hosts the principal bedroom with a stylish en suite shower room, accompanied by a luxury family bathroom serving the remaining bedrooms. Additionally, a spacious bedroom with its own en suite shower room is situated on the second floor, making it a perfect guest or teenagers' retreat.

These visually impressive homes embody a contemporary design enhanced by charming features such as soft render and glazed facades. Two of the properties are positioned facing the road with parking located at the rear, while the other homes are set further back from the close, encircled by thoughtfully planned boundaries that ensure privacy.





- Luxury Detached Houses
- Developed by Le Grand
- Four Spacious Bedrooms
- Private Gardens
- 10-Year Warranty
- Pittville Location
- Open-Plan Living
- High-End Finishes
- Off-Road Parking
- Exceptional Community



PINK PLAN

