



Broadmayne Mews , Cleavelands Drive, Pittville, Cheltenham, GL50

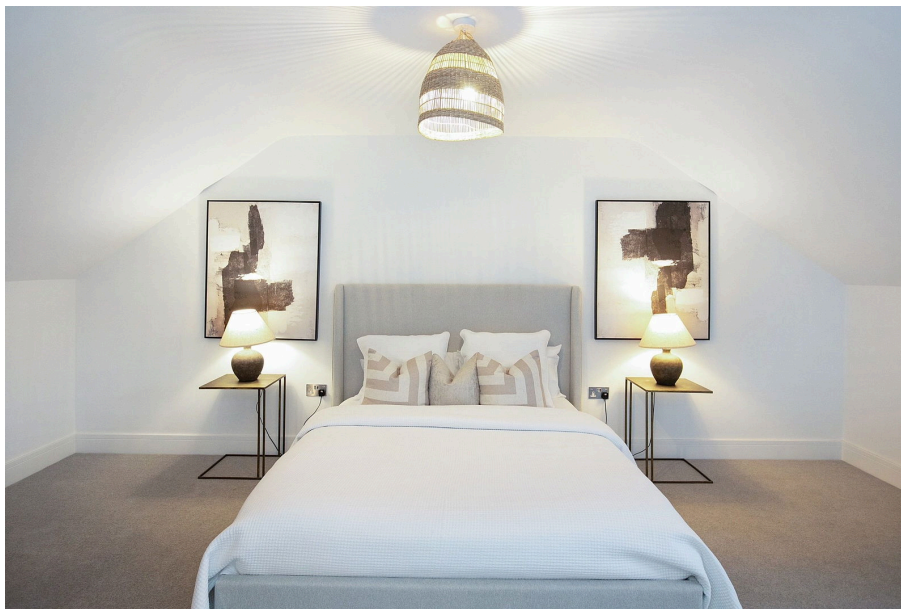
Guide Price £900,000

🛏 4 🍳 2 🚗 2



- Luxury Detached Houses
- Developed by Le Grand
- Four Spacious Bedrooms
- Private Gardens
- 10-Year Warranty
- Pittville Location
- Open-Plan Living
- High-End Finishes
- Off-Road Parking
- Exceptional Community





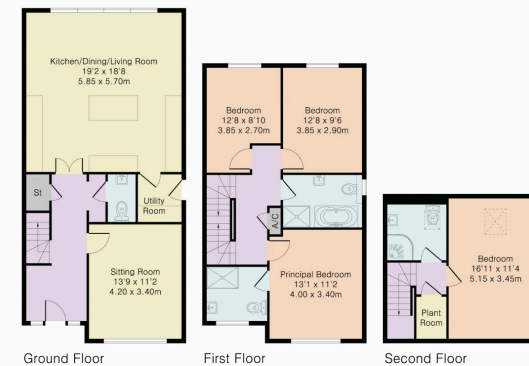
Welcome to Broadmayne Mews, an exclusive new development comprised of five luxury detached houses, ideally situated in the prestigious Pittville area of Cheltenham. This sought-after location establishes a prime residence for families wanting to blend modern sophistication with timeless charm. Developed by the highly regarded Le Grand Developments, recognized for their meticulous craftsmanship and commitment to quality, Broadmayne Mews offers an elevated living experience.

Approximate Gross Internal Area 1628 sq ft - 151 sq m

Ground Floor Area 718 sq ft - 67 sq m

First Floor Area 594 sq ft - 55 sq m

Second Floor Area 316 sq ft - 29 sq m



PINK PLAN



Elliot Oliver Sales
101 Promenade, Cheltenham GL50 1NW
01242 321091
www.elliottoliver.co.uk

