

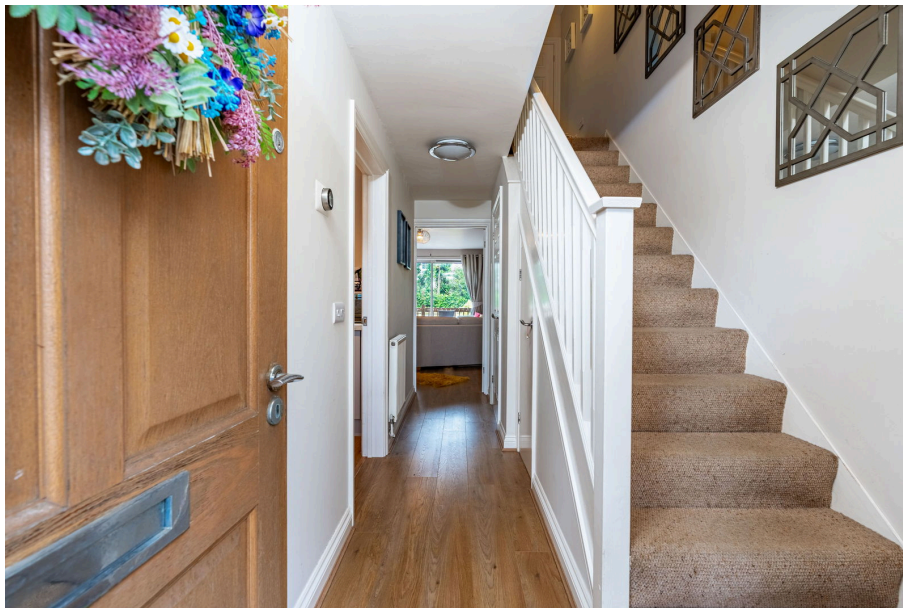




College Gate, Cheltenham, GL53 7SF

£375,000

🛏 2 🚿 2 🛋 1



- Central Cheltenham
- Off-Road Parking
- Mews Cul-de-Sac
- Two En-Suite Bathroom
- Two Bedrooms
- South-Facing Garden
- Modern Kitchen
- Gas Central Heating

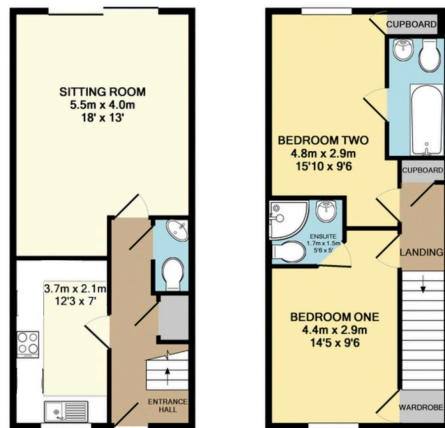






Explore this elegantly presented two-bedroom, two-bathroom townhouse in the heart of Cheltenham, just a short stroll from Cheltenham Hospital and Sandford Lido. Located in a secluded mews cul-de-sac, this chain-free home boasts spacious living areas, off-road parking for several vehicles, and a private rear garden.

The modern kitchen features stylish units and built-in appliances, including a Bosch fridge and freezer. Upstairs, you will find two well-sized bedrooms, with the primary bedroom offering an en-suite shower room and fitted wardrobes. A chic family bathroom caters to the generous second double bedroom. The low-maintenance rear garden, complete with a decked seating area, is perfect for outdoor relaxation. Experience comfortable living in a desirable neighborhood, close to essential amenities. This is a must-see!



Whilst every attempt has been made to ensure the accuracy of the floor plan contained here, measurement of doors, windows, rooms and any other items are approximate and no responsibility is taken for any error, omission, or mis-statement. This plan is for illustrative purposes only and should be used as such by any prospective purchaser. The services, systems and appliances shown have not been tested and no guarantee as to their operability or efficiency can be given.  
Made with Metropix ©2019

