





Bouncers Lane, Prestbury, Cheltenham, GL52 5JB

£400,000

3 1 1





An exciting opportunity to purchase a three-bedroom semi-detached home in the heart of Prestbury. The property offers tremendous scope for renovation and extension (subject to planning permission), with off-road parking, a modern detached garage, and beautiful open views towards Cleeve Hill. A perfect project for those looking to create a bespoke family home in a highly sought-after setting.

This three-bedroom semi-detached property presents an excellent opportunity for buyers looking for a renovation project in the popular village of Prestbury. Situated in a peaceful residential area, the property occupies a generous plot with parking for multiple vehicles and enjoys lovely, open views towards Cleeve Hill.

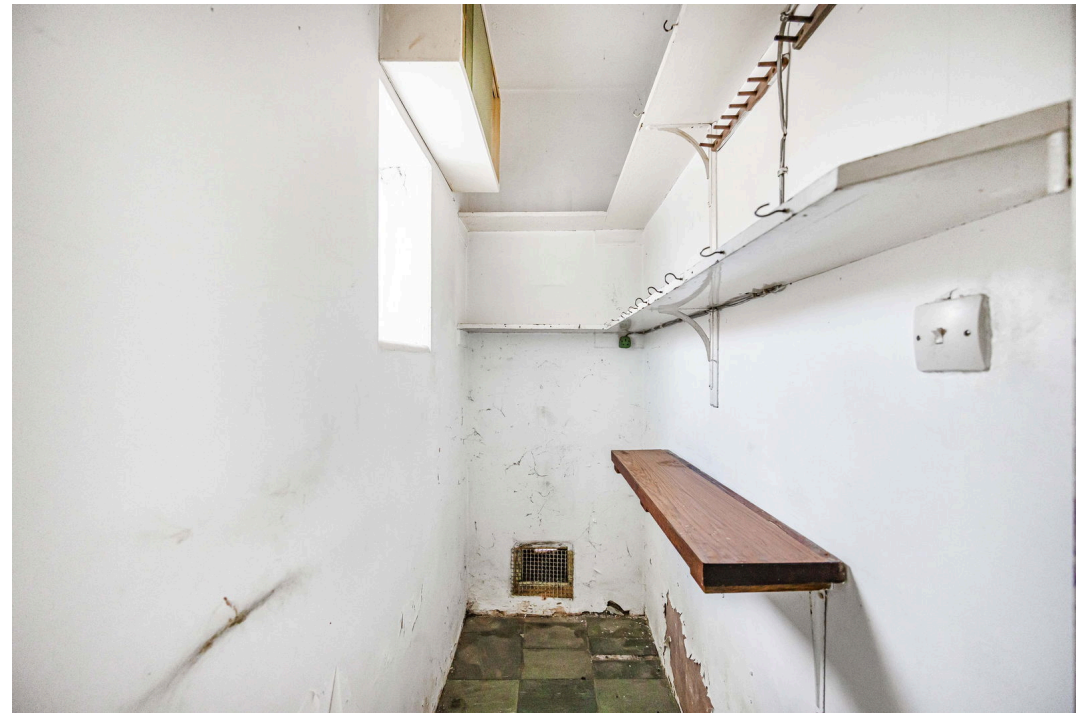
Internally, the accommodation offers a practical layout with plenty of potential to remodel and extend (subject to planning permission). The ground floor comprises an entrance hallway, a bright dual-aspect living room, downstairs shower room, a kitchen with adjacent pantry and utility storage, and a conservatory providing direct access to the rear garden.

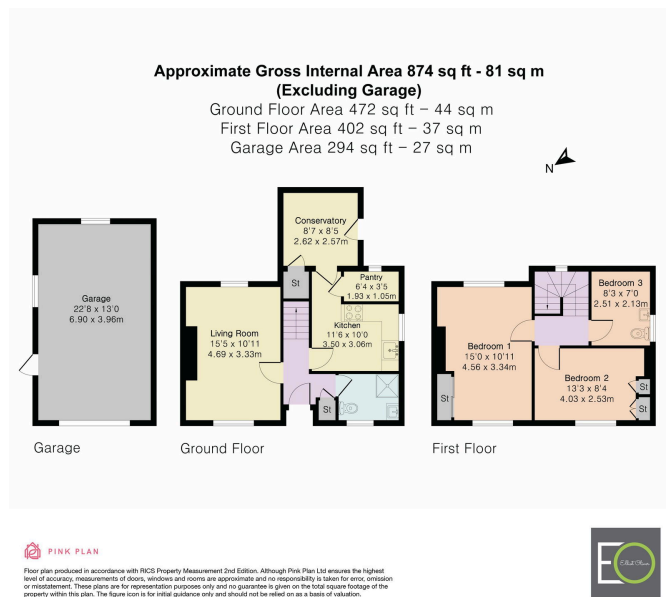
Upstairs, there are three well-proportioned bedrooms. The rooms at the rear enjoy elevated countryside views, adding to the home's charm and appeal.

Outside, the rear garden is mainly laid to lawn with planting borders, a greenhouse, and ample space for outdoor seating. The recently built detached garage offers secure storage or workshop potential and complements the generous off-road parking to the front.

Positioned in one of Cheltenham's most desirable areas, this property combines the convenience of local amenities and schools with the tranquility of semi-rural surroundings. Prestbury village centre, with its shops, pubs, and bus routes, is just a short stroll away, while Cheltenham town centre and Cleeve Hill are within easy reach.

This is a rare opportunity to acquire a home with significant scope for improvement and the potential to create a long-term family residence in a beautiful setting.





- Three-bedroom semi-detached house
- In need of full renovation, ideal for buyers seeking a project
- Generous driveway with parking for up to three vehicles
- Conservatory overlooking the garden and views of Cleeve Hill
- Not overlooked at the rear, private outlook
- Desirable Prestbury location
- Excellent potential to extend and modernise (Subject to planning)
- Newly built Detached garage
- Good-sized garden with greenhouse and patio area
- Spacious living room with dual-aspect windows

