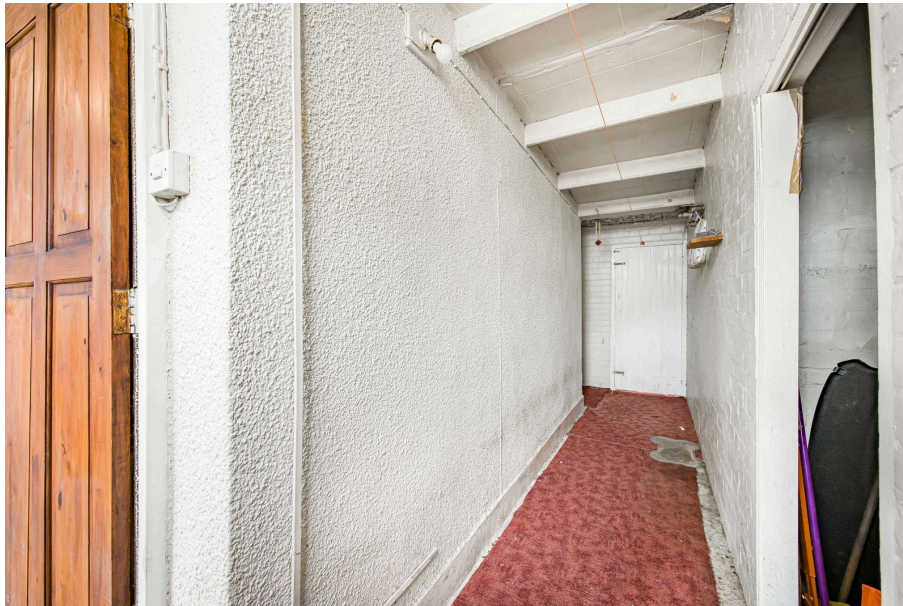




Chiltern Road, Prestbury, Cheltenham

£250,000

🛏 3 🚿 1 🚗 0



- Three bedrooms
- Two reception rooms
- Side access with additional storage
- Low maintenance garden
- Semi-detached house
- Kitchen
- Bathroom
- Off-street parking



An exciting opportunity awaits with this three-bedroom semi-detached house, offering excellent potential to create a dream home tailored to your taste.



Approximate Gross Internal Area 1017 sq ft - 94 sq m

Ground Floor Area 594 sq ft – 55 sq m

First Floor Area 423 sq ft – 39 sq m

