



Western Court, Western Road, Christchurch, Cheltenham, GL50

£275,000

🛏 2 🚿 1 🛋 1



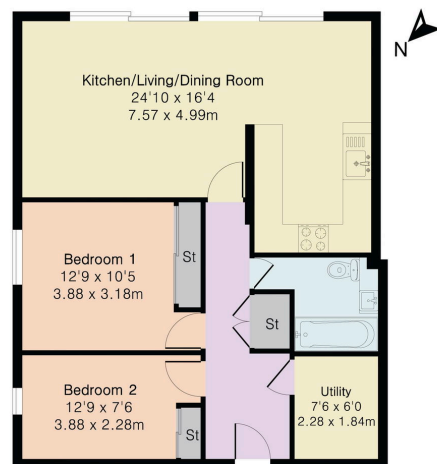
- Two double bedrooms with built-in wardrobes
- Modern kitchen
- Secure underground parking
- Located in a modern, well-kept development
- Ideal for first-time buyers, downsizers, or investors
- Spacious open-plan kitchen/living/dining area
- Stylish bathroom with shower over bath
- Access to communal laundry room
- Excellent transport links and local amenities nearby



A beautifully presented ground floor apartment offering two bedrooms with built-in wardrobes, a spacious open-plan kitchen/living/dining area, and direct access to a private patio and communal gardens.



Approximate Gross Internal Area 739 sq ft - 69 sq m



Ground Floor

