



Montpellier Court Lansdown Road, Lansdown, Cheltenham, GL50

£240,000

🛏 1 🚿 1 🚗 1



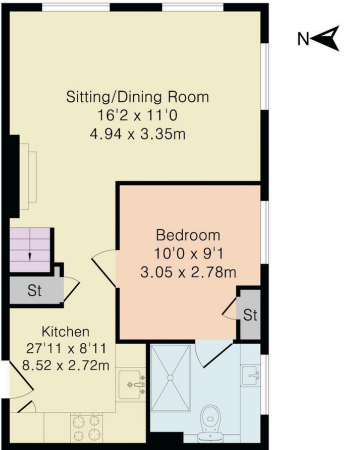
- Grade II Listed Building
- Second-Floor Apartment
- Open-Plan Living Space
- En-Suite Shower Room
- Spacious Double Bedroom
- Shared Parking
- Communal Garden
- Prime Montpellier Location
- Great Transport Links



Charming 1-bed Grade II listed apartment in Montpellier Court, that is close to cafés, shops, and transport links.



Approximate Gross Internal Area 454 sq ft - 42 sq m



Second Floor

English | [Cymraeg](#)

Energy performance certificate (EPC)

Energy rating D	Valid until 1 April 2028
Current 60 D	Potential 67 D

Property type Top-floor flat

Total floor area 42 square metres

Rules on letting this property

Properties can be let if they have an energy rating from A to E.

You can view [guidance for landlords on the regulations and exemptions](#) (https://www.gov.uk/government/uploads/system/uploads/attachment_data/file/600000/landlord_guidance.pdf)

Energy rating and score

This property's energy rating is D. It has the potential to be D.

[Click here to improve this property's energy efficiency](#)

Score	Energy rating	Current	Potential
92+	A		
81-91	B		
69-80	C		
55-68	D	60 D	67 D
39-54	E		
21-38	F		
1-20	G		

The graph shows the property's current and potential energy rating.

Properties get a rating from A (best) to G (worst) and a score. The better the rating and score, the lower your energy bills are likely to be.

For properties in England and Wales:

- the average energy rating is D
- the average energy score is 60

Breakdown of property's energy performance

Elliot Oliver Sales

101 Promenade, Cheltenham GL50 1NW
01242 321091
www.elliottoliver.co.uk

