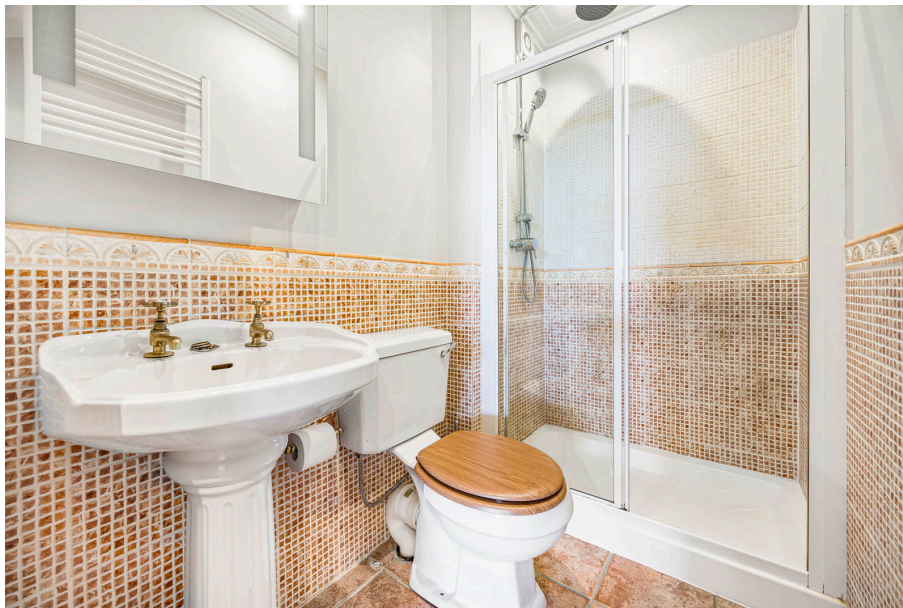




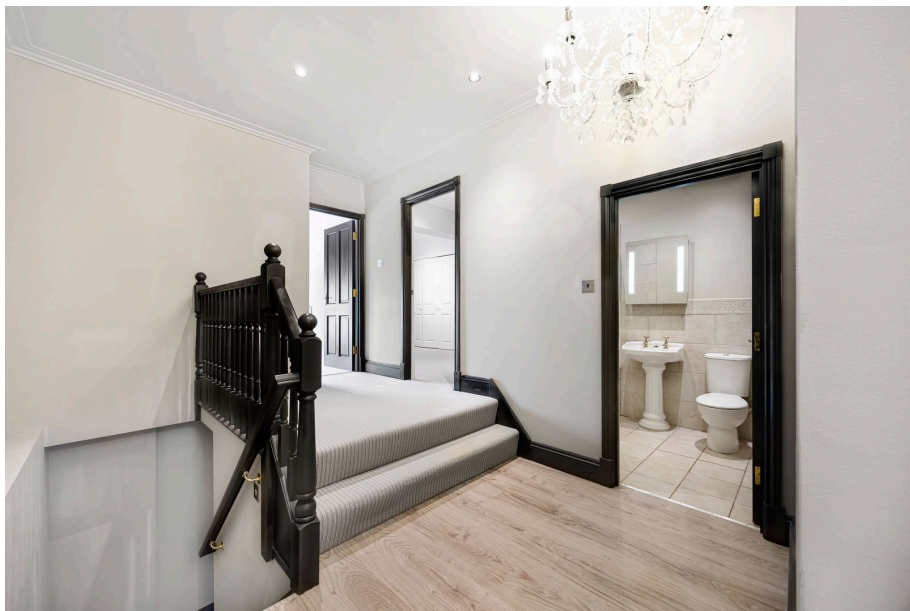
Douglas House, Vittoria Walk, Cheltenham, GL50

£595,000

🛏 3 🍳 2 🛋 1



- Prime Location Historic
- Charm Private
- Private Courtyard
- Spacious Reception
- Period Features
- Modern Kitchen
- En-suite Bedroom
- Private Terrace
- Parking Space
- Excellent Connectivity



Located in the heart of Cheltenham, this Grade II listed apartment seamlessly blends historical charm with modern amenities. Accessible via a private courtyard off Vittoria Walk, it offers tranquility in an urban setting. Inside, a broad hallway leads to a spacious reception room featuring period details, floor-to-ceiling French windows, and a cozy gas fireplace, which opens onto a private terrace. The kitchen is well-equipped with integrated appliances and dining space. The main bedroom includes fitted wardrobes and an en-suite, while another bedroom serves as a study. With parking and excellent transport links, this property is perfect for both leisure and commuting.



Approximate Gross Internal Area 1188 sq ft - 111 sq m

Lower Ground Floor Area 244 sq ft – 23 sq m

Ground Floor Area 944 sq ft – 88 sq m

