





# Duke of Wellington Court, Fishers Lane, Cheltenham, GL52

£250,000

🛏 2 🍳 2 🚿 1

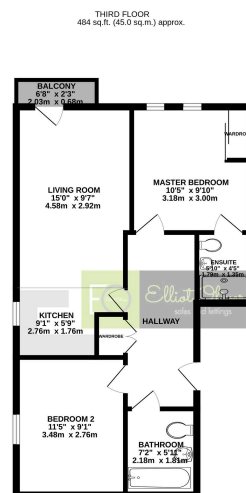


- Two Bedroom
- Allocated gated parking space
- Crest Nicholson built
- Leasehold
- Upper floor apartment
- Town centre location
- Gas central heating
- Integrated appliances





This Crest Nicholson property is a beautifully maintained two-bedroom apartment, and offers light and airy accommodation in a prime town centre location.



TOTAL FLOOR AREA: 484 sq.ft. (45.0 sq.m.) approx.  
We warrant that the floor area has been measured in accordance with the Royal Institution of Chartered Surveyors (RICS) Professional Surveying Standards (PS) and is correct to the best of our knowledge and belief. This does not constitute a guarantee of accuracy and is for information only. The actual floor area may vary slightly due to construction tolerances and measurement methods. Please refer to the RICS Professional Surveying Standards (PS) for more information.

